



SIRIO
antenne

10-11 meters
ANTENNAS

New Release

2020 - 2021

MADE IN ITALY since 1972



ALWAYS SUPPORT YOU....



SIRIO
antenne

COMPANY
PROFILE

MADE IN ITALY

Sirio Antenne was founded in 1972 by Giuseppe Grazioli and during almost 48 years the company got a considerable growth on the international markets earning the reputation of a reliable high quality supplier in the field of communication.

ALL PRODUCTS are 100% manufactured in ITALY. From the R&D to the final assembling the process is entirely handled according to the ISO 9001:2015 standards to grant the best quality.



HEADQUARTER



ISO 9001:2015
certified since 2004

RoHS3
compliance

according to EU directive 2015/863/EC



The single antenna is a passive accessory and no CE APPROVAL is required

GENUINE ONLY
CHECK THE SIRIO ORIGINAL PRODUCTS ON
WWW.SIRIOANTENNE.IT

Scratchable area to
discover your password

- E** Descubra su código y compruebe que su producto es ORIGINAL
- GB** Scratch-off and use your password to check the ORIGINAL product
- RU** Сотрите и используйте пароль для проверки подлинности продукта.
- PL** Zdrap i użyj hasła aby sprawdzić czy produkt jest ORYGINALNY
- RO** Razuiți și utilizați parola pentru a afla dacă produsul este ORIGINAL
- CZ** Seškrábnete ochranou vrstvou a podle kódu, který se vám zobrazí, zkontrolujte, že se jedná o originální SIRIO





MADE IN ITALY since 1972

Gain-Master

Hi-Tech Fiberglass Base Station Antenna for Ham band

FEATURES

- # 0.625 λ center feeded vertical dipole
- # 1 to 2 dB higher gain than conventional 5/8 λ
- # Low radiation angle for excellent DX
- # Fiberglass 4 sections composite tube
- # DC-Ground protection
- # PLUG & PLAY, no tuning required

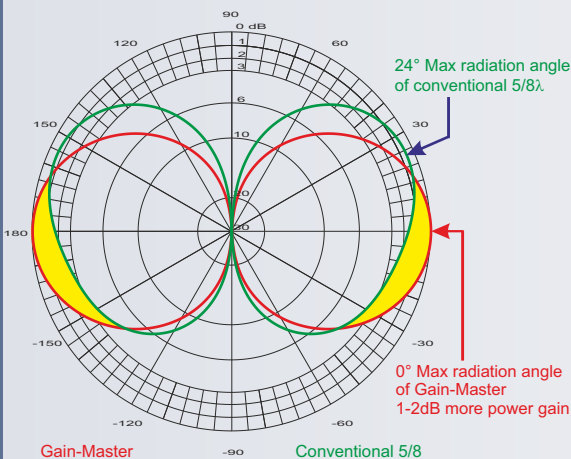
TECHNICAL DATA

Type: 5/8 λ center feed vertical dipole
 Impedance: 50 Ω
 Frequency range @ SWR \leq 2:
 25.5 - 30 MHz wide band from 10m to 12m* ham band
 Radiation: omnidirectional
 Polarization: linear vertical
 Max. power: 500 Watts (CW) continuous
 Gain: 1 to 2 dB higher than conventional 5/8 λ
 Wind resistance: w/bracing system: 160 km/h, 100 mi/h
 Height (approx.): 7360 mm, 24ft
 Weight (approx.): 3000 gr, 6.6 lb
 Connector: ... UHF-female, PTFE insulator & gold plated central pin
 Mounting mast: \varnothing 35-54 mm, \varnothing 1.4 - 2.1 in

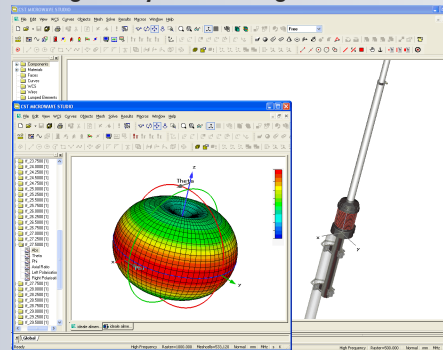
* 12m band covered with manual or automatic antenna tuner.

P/N 2113220.00 GAIN-MASTER

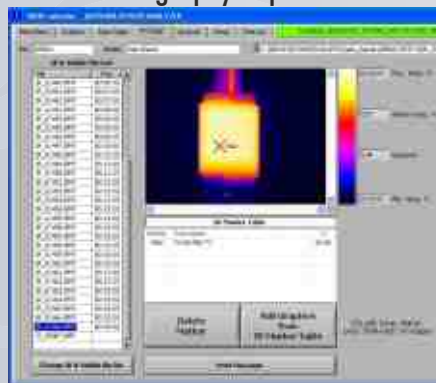
TYPICAL RADIATION PATTERN



Designed by electromagnetic simulation



Thermography of power test



PLUG & PLAY

Wideband
No tuning required



COAXIAL RF
CHOKE COIL

ALUMINIUM BRACKET
& TUBE, STAINLESS
STEEL HARDWARE

WARNING

INSTALLATION OF THIS PRODUCT NEAR POWER LINES IS DANGEROUS. FOR YOUR SAFETY AND BEFORE YOU BEGIN INSTALLATION, READ THE SEPARATE SAFETY INFORMATION SHEET.

More technical information on: www.gain-master.it
Gain-Master™ is a registered Trade Mark of SIRIO antenne s.r.l.





MADE IN ITALY since 1972

Gain-MasterTM HW

Hi-Tech Fiberglass Base Station Antenna for Ham band

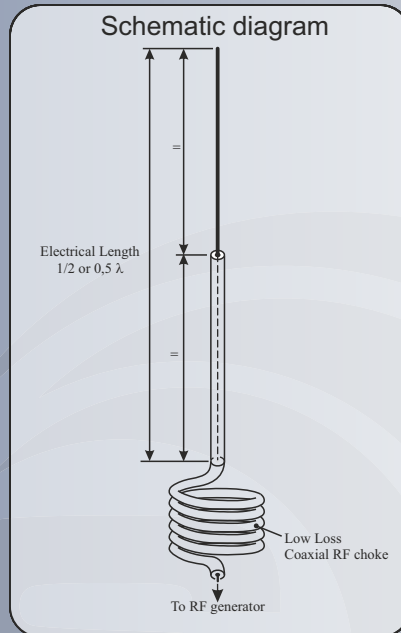


FEATURES

- # 0.5 λ center feeded vertical dipole
- # Tunable Base station antenna
- # Omnidirectional
- # Low radiation angle for excellent DX
- # Fiberglass 3 sections composite tube

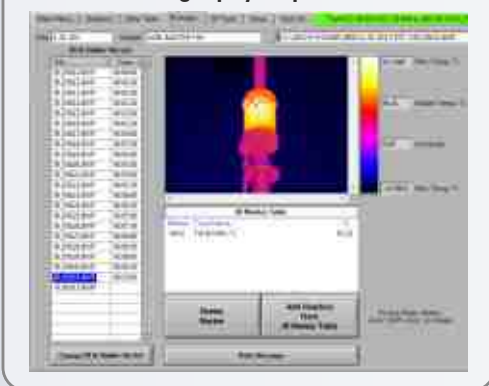
TECHNICAL DATA

Type: 1/2 λ center feed vertical dipole
 Impedance: 50 Ω
 Frequency range: 27.2 ... 30MHz tunable
 Radiation: omnidirectional
 Polarization: linear vertical
 Max. power: 500 Watts (CW) continuous
 Bandwidth @ SWR \leq 2: 1.8 MHz @ 27.2 MHz
 Gain: 0 dBd, 2.15 dBi
 Wind resistance: 160 km/h, 100 mi/h
 Height (approx.): 5560 mm, 18.2ft
 Weight (approx.): 1600 gr, 5.76 lb
 Connector: ... UHF-female, PTFE insulator & gold plated central pin
 Mounting mast: \varnothing 35-54 mm, \varnothing 1.4 -2.1 in



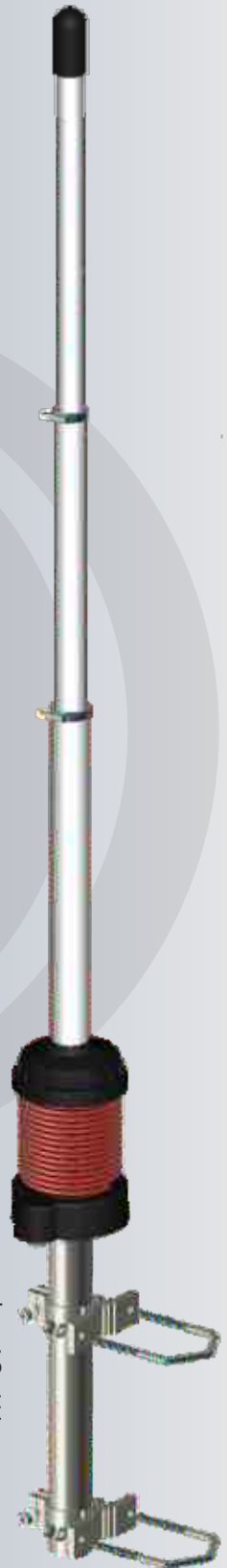
P/N 2113120.00 GAIN-MASTER HW

Thermography of power test



COAXIAL RF CHOKING COIL

ALUMINIUM BRACKET & TUBE, STAINLESS STEEL HARDWARE



WARNING

INSTALLATION OF THIS PRODUCT NEAR POWER LINES IS DANGEROUS. FOR YOUR SAFETY AND BEFORE YOU BEGIN INSTALLATION, READ THE SEPARATE SAFETY INFORMATION SHEET.



MADE IN ITALY since 1972

SIRIO 827 BLIZZARD 2700

FEATURES

- # Tunable Base station antenna
- # Omnidirectional
- # Very Heavy duty constructions
- # High power handling capability
- # Low radiation angle for excellent DX
- # Equipped with excellent multi element ground plane
- # Made of aluminium alloy 6063 T-832
- # DC-Ground protection

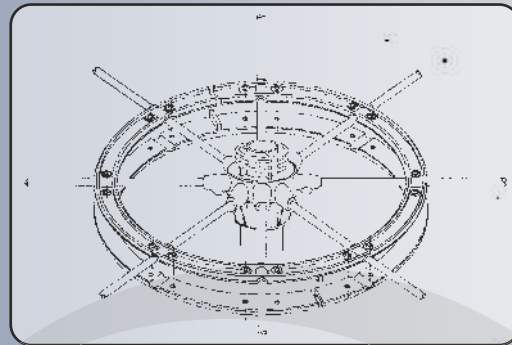
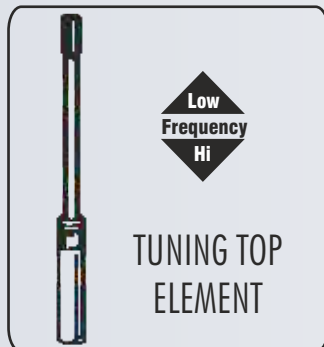
TECHNICAL DATA

Type: 5/8 λ ground plane
 Impedance: 50 Ω
 Frequency range: 26.4 ... 28.4 MHz tunable
 Radiation: omnidirectional
 Polarization: linear vertical
 SWR @ res. freq.: ≤ 1.1
 Max. power: 1000 Watts (CW) continuous
 3000 Watts (CW) short time
 Bandwidth @ SWR 2: ≥ 2 MHz
 Gain: 1.5 dBd, 3.65 dBi
 Wind resistance: 130 km/h, 81 mi/h
 Height (approx.): 6700 mm, 22 ft
 Weight (approx.): 6000 gr, 13.2 lb
 Radial length (approx.): 1400 mm, 55 in
 Connector: UHF-female
 Mounting mast: \varnothing 35-39 mm, \varnothing 1.4-1.5 in

P/N 2104801.00 SIRIO 827
 P/N 2104801.00/BLIZ BLIZZARD 2700

SPARE PARTS

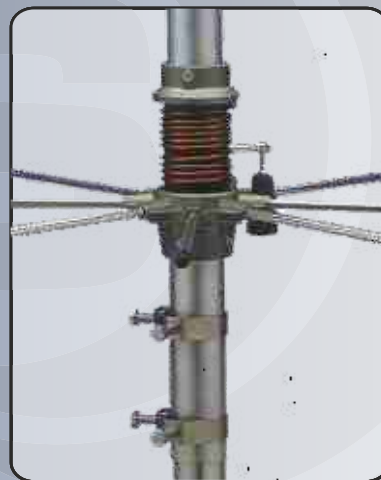
P/N 2530601.00 1x Radial SIRIO 827



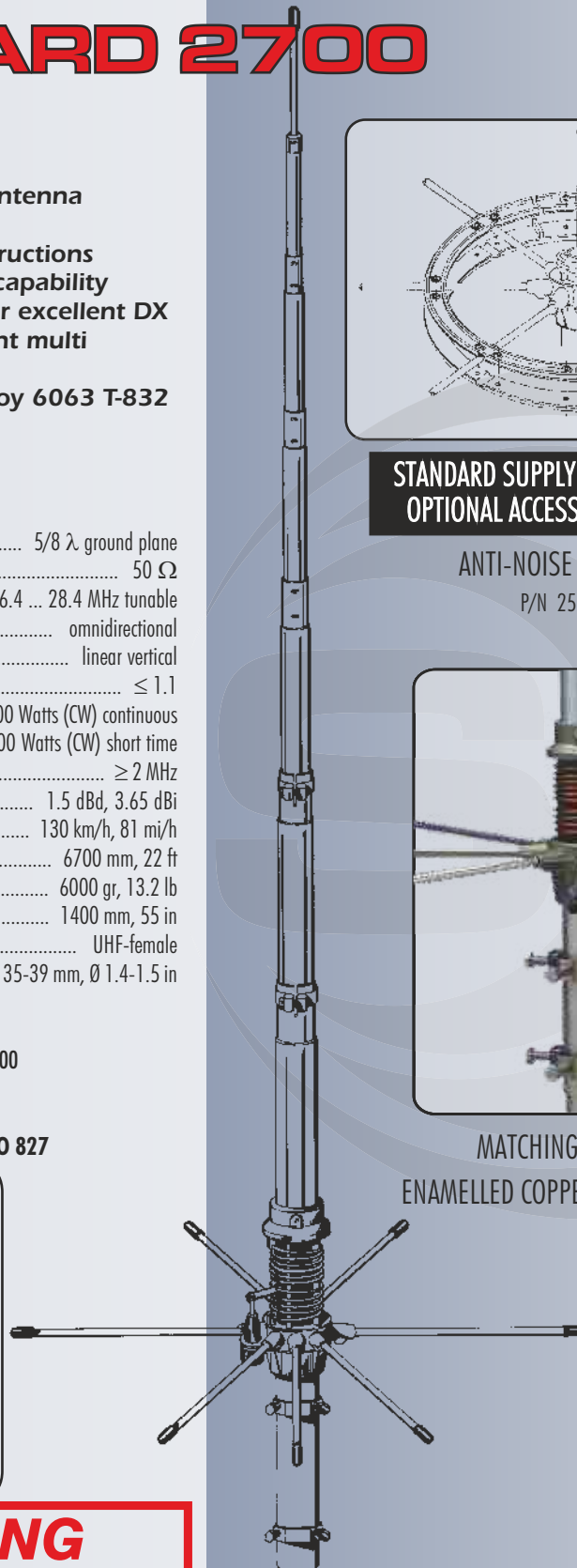
STANDARD SUPPLY FOR BLIZZARD 2700
 OPTIONAL ACCESSORY FOR SIRIO827

ANTI-NOISE NYLON RING

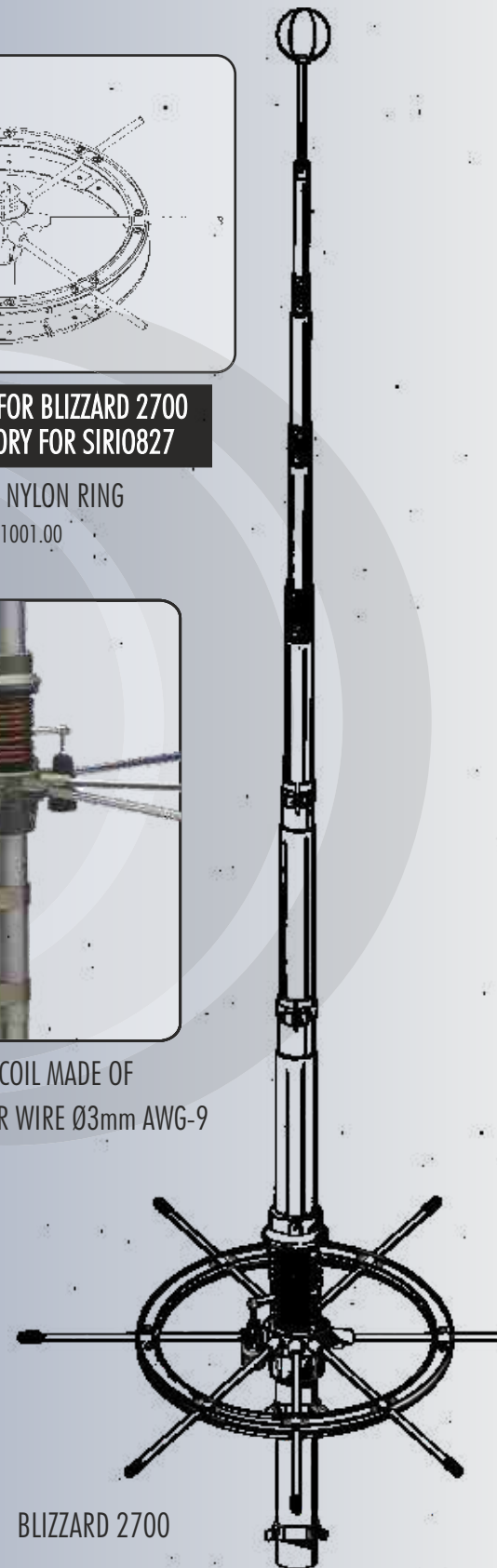
P/N 2511001.00



MATCHING COIL MADE OF
 ENAMELLED COPPER WIRE \varnothing 3mm AWG-9



SIRIO 827



BLIZZARD 2700

WARNING

INSTALLATION OF THIS PRODUCT NEAR POWER LINES IS DANGEROUS. FOR YOUR SAFETY AND BEFORE YOU BEGIN INSTALLATION, READ THE SEPARATE SAFETY INFORMATION SHEET.



MADE IN ITALY since 1972

SIRIO 2008 SIRIO 2016

FEATURES

- # Tunable Base station antennas
- # Omnidirectional
- # High power handling capability
- # Low radiation angle for excellent DX
- # Coil protected by transparent cover
- # Equipped with excellent multi elements ground plane
- # DC-Ground protection
- # Made of aluminium alloy 6063 T-832

TECHNICAL DATA

Type: 5/8 λ ground plane
 Impedance: 50 Ω
 Frequency range: 26.4 ... 28.2 MHz tunable
 Radiation: omnidirectional
 Polarization: linear vertical
 SWR @ res. freq.: ≤ 1.1
 Max. power: 1000 Watts (CW) continuous
 3000 Watts (CW) short time
 Bandwidth @ SWR ≤ 2 :
 SIRIO 2008: ≥ 1750 kHz
 SIRIO 2016: ≥ 2100 kHz
 Gain: 1.3 dBd, 3.45 dBi
 Wind resistance: 130 km/h, 81 mi/h
 Height (approx.): 6100 mm, 20 ft
 Weight (approx.): 5300 gr, 13.4 lb
 Radial length (approx.):
 SIRIO 2008: 1320 mm, 52 in
 SIRIO 2016: 700 mm, 27.5 in
 Connector: UHF-female
 Mounting mast: \varnothing 40-50 mm, \varnothing 1.5-1.9 in

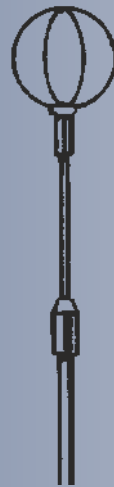
P/N 2100201.00 SIRIO 2008, 8 radials
 P/N 2103101.00 SIRIO 2016, 16 radials

SPARE PARTS

P/N 2530301.00 1x Radial SIRIO 2008
 P/N 2530401.00 1x Radial SIRIO 2016

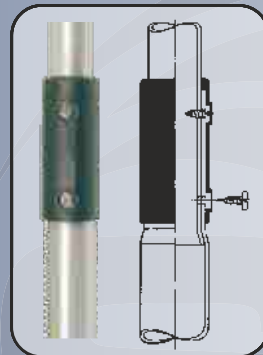
WARNING

INSTALLATION OF THIS PRODUCT NEAR POWER LINES IS DANGEROUS. FOR YOUR SAFETY AND BEFORE YOU BEGIN INSTALLATION, READ THE SEPARATE SAFETY INFORMATION SHEET.



Low
Frequency
Hi

TUNING TOP
ELEMENT
WITH
ANTI-STATIC
CAGE



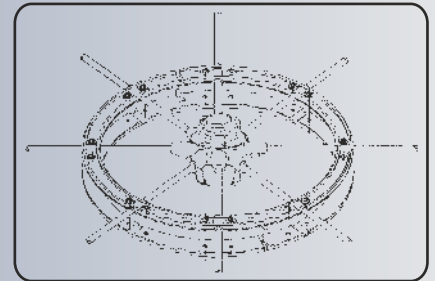
JOINTING SLEEVE

TELESCOPIC ALUMINIUM
TUBES FIRST SECTION
STARTS FROM

\varnothing 30mm 1"-3/16

THICKNESS 1.25mm 0.05"

Optional for SIRIO 2008



ANTI-NOISE NYLON RING
Optional
P/N 2511001.00



HI-Q LOW LOSS MATCHING COIL
SUSPENDED ON 4 PLASTIC FINGER
MADE OF COPPER WIRE \varnothing 4.5mm AWG-5



DRAWING SHOW SIRIO 2016
model with 16 ground radials



MADE IN ITALY since 1972

NEW VECTOR 4000

FEATURES

- # Tunable Base station antenna
- # Omnidirectional
- # High power handling capability
- # Fedded with Gamma Match system
- # Made of aluminium alloy 6063 T-832
- # Low radiation angle for excellent DX

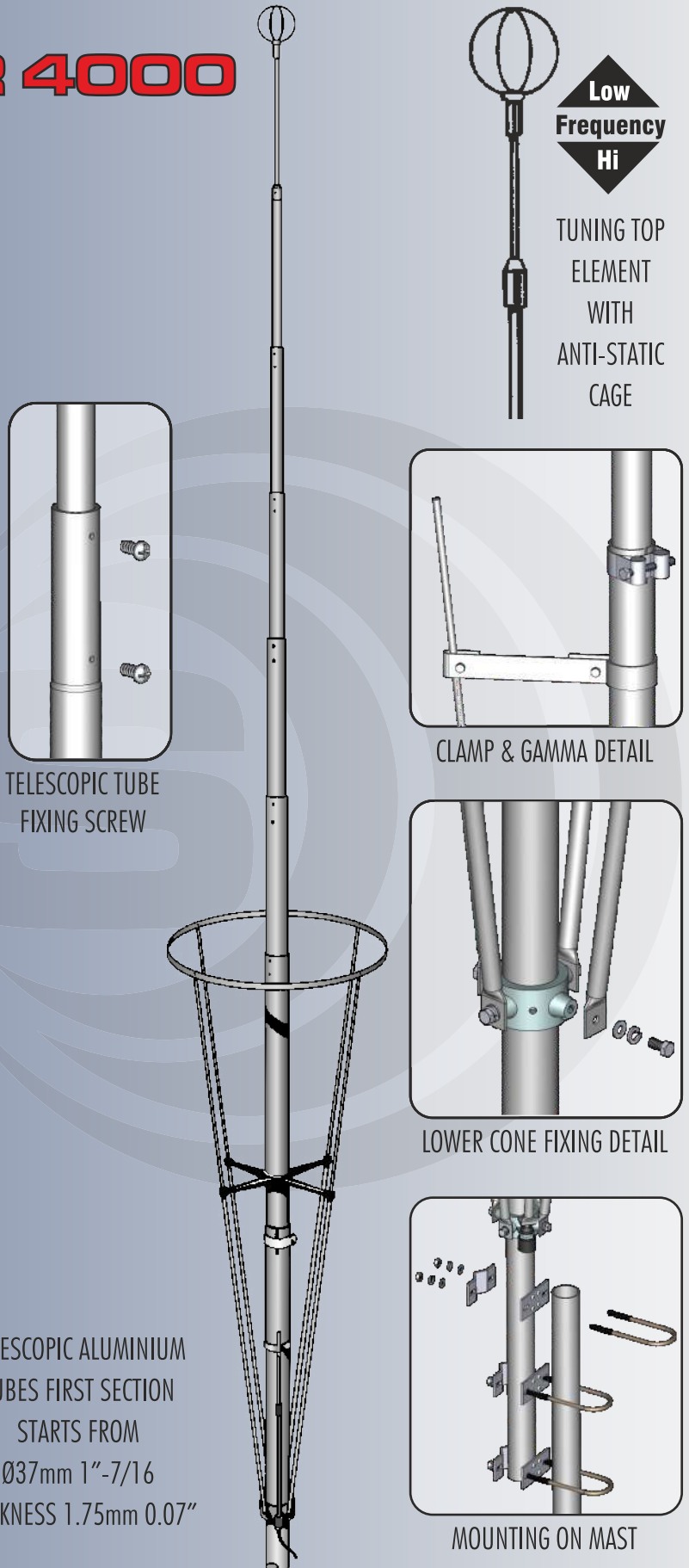
TECHNICAL DATA

Type: $3/4 \lambda$ coaxial J-pole
 Impedance: 50Ω
 Frequency range: 27 ... 28.5 MHz tunable
 Radiation: omnidirectional
 Polarization: linear vertical
 SWR @ res. freq.: ≤ 1.2
 Max. power: 1000 Watts (CW) continuous
 3000 Watts (CW) short time
 Bandwidth @ SWR ≤ 2 : ≥ 1400 kHz
 Gain: 2 dBd, 4.15 dBi
 Wind resistance: 130 km/h, 81 mi/h
 Height (approx.): 8480 mm, 27.8 ft
 Weight (approx.): 4700 gr, 10.4 lb
 Connector: UHF-female
 Mounting mast: $\varnothing 35-42$ mm, $\varnothing 1.4-1.6$ in

P/N 2100701.00 NEW VECTOR 4000

WARNING

INSTALLATION OF THIS PRODUCT NEAR POWER LINES IS DANGEROUS. FOR YOUR SAFETY AND BEFORE YOU BEGIN INSTALLATION, READ THE SEPARATE SAFETY INFORMATION SHEET.



TELESCOPIC ALUMINIUM
 TUBES FIRST SECTION
 STARTS FROM
 $\varnothing 37$ mm 1"-7/16
 THICKNESS 1.75mm 0.07"



MADE IN ITALY since 1972

NEW TORNADO

FEATURES

- # Tunable Base station antenna
- # Omnidirectional
- # High power handling capability
- # Big coil made of aluminium wire
Ø6mm AWG-3
- # Low radiation angle for excellent DX
- # Made of aluminium alloy 6063 T-832

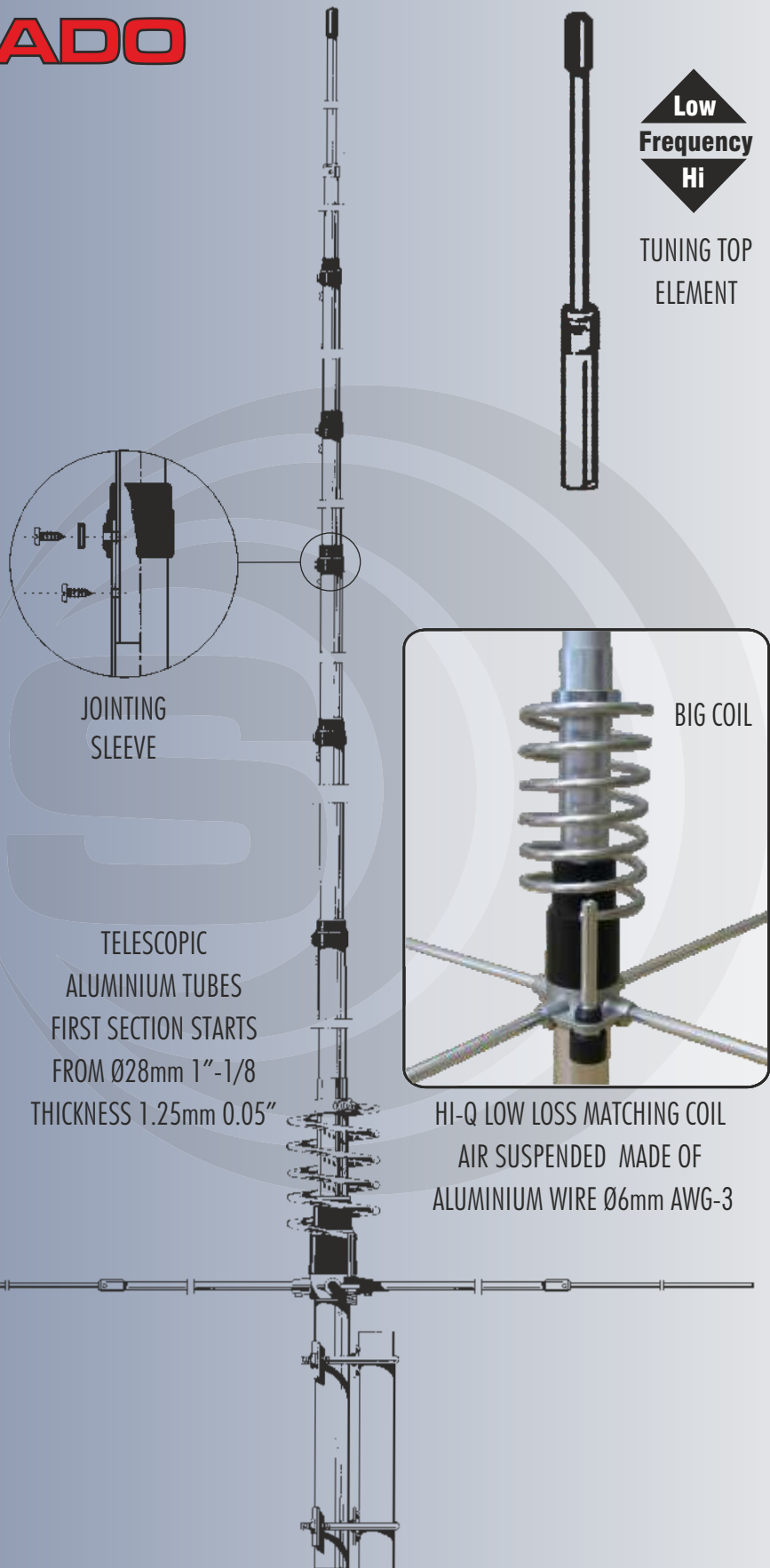
TECHNICAL DATA

Type: 5/8 λ ground plane
 Impedance: 50 Ω
 Frequency range: 27 ... 30 MHz tunable
 Radiation: omnidirectional
 Polarization: linear vertical
 SWR @ res. freq.: ≤ 1.2 @ 27 MHz
 Max. power: 1000 Watts (CW) continuous
 3000 Watts (CW) short time
 Bandwidth @ SWR ≤ 2: ≥ 1300 kHz
 Gain: 1.2 dBd, 3.35 dBi
 Wind resistance: 130 km/h, 81 mi/h
 Height (approx.): 7230 mm, 23.7 ft
 Weight (approx.): 2900 gr, 6.4 lb
 Radial length (approx.): 2000 mm, 78.7 in
 Connector: UHF-female
 Mounting mast: Ø 35-42 mm, Ø 1.4-1.6 in

P/N 2100501.00 NEW TORNADO

SPARE PARTS

P/N 2530501.00 1x Radial NEW TORNADO



WARNING

INSTALLATION OF THIS PRODUCT NEAR POWER LINES IS DANGEROUS. FOR YOUR SAFETY AND BEFORE YOU BEGIN INSTALLATION, READ THE SEPARATE SAFETY INFORMATION SHEET.



MADE IN ITALY since 1972

GPE 5/8 GPS 1/2

FEATURES

- # Tunable Base station antennas
- # Omnidirectional
- # Low radiation angle for excellent DX
- # DC-Ground protection
- # Coil protected by transparent cover
- # Made of aluminium alloy 6063 T-832

TECHNICAL DATA

Type:

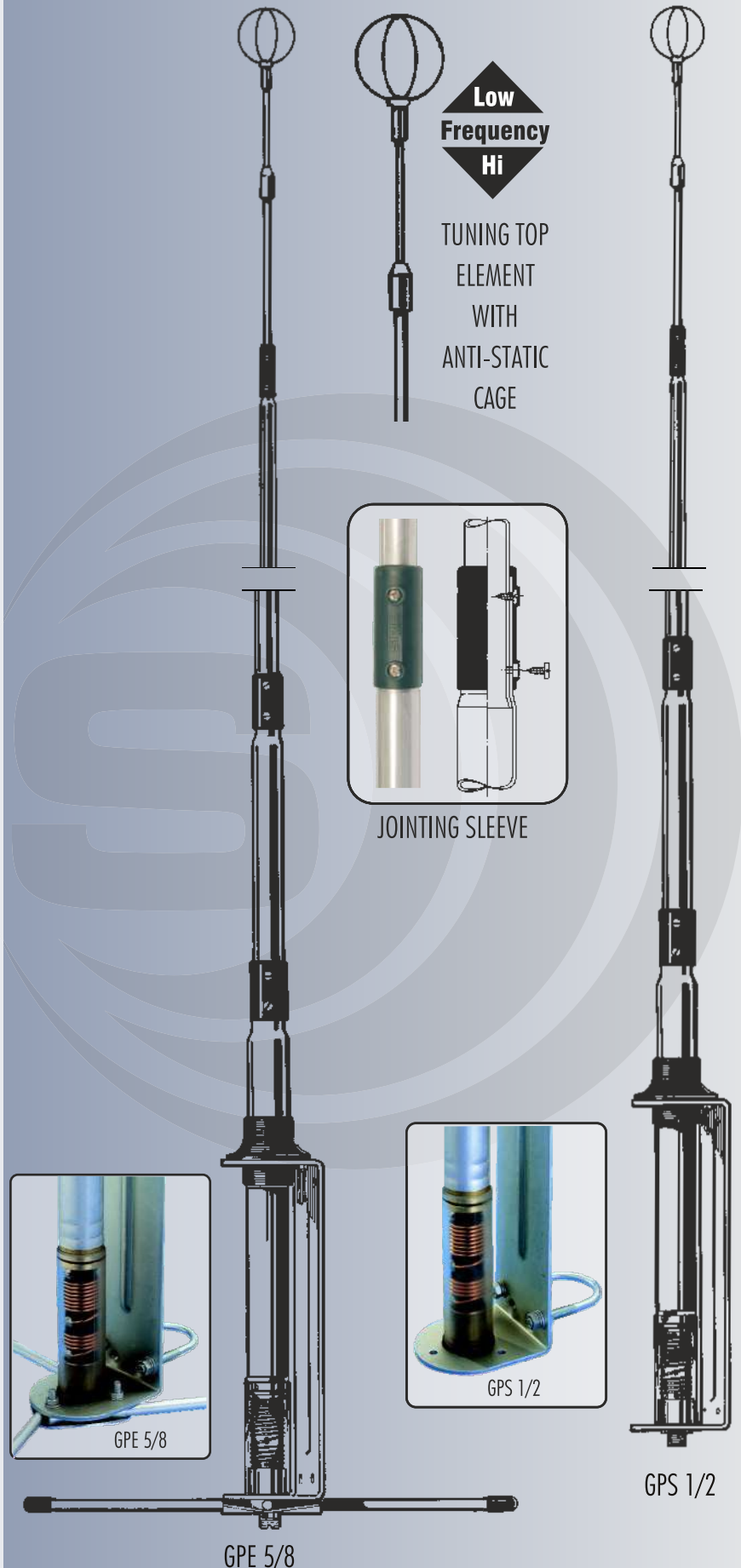
| | |
|----------------------------------|--|
| GPE 5/8 | 5/8 λ ground plane |
| GPS 1/2 | 1/2 λ |
| Impedance: | 50 Ω |
| Frequency range: | 26.4 ... 29.0 MHz tunable |
| Radiation: | omnidirectional |
| Polarization: | linear vertical |
| SWR @ res. freq.: | ≤ 1.3 |
| Max. power: | 250 Watts (CW) continuous |
| | 750 Watts (CW) short time |
| Bandwidth @ SWR ≤ 2 : | ≥ 1600 kHz |
| Gain: | |
| GPE 5/8 | 1.2 dBd, 3.35 dBi |
| GPS 1/2 | 0 dBd, 2.15 dBi |
| Wind resistance: | 130 km/h, 81 mi/h |
| Height (approx.): | 5950 mm, 19.5 ft |
| Weight (approx.): | |
| GPE 5/8 | 2500 gr, 5.5 lb |
| GPS 1/2 | 2100 gr, 4.6 lb |
| Radial length GPE 5/8: | 1320 mm, 52 in |
| Connector: | UHF-female |
| Mounting mast: | \varnothing 35-42 mm, \varnothing 1.4-1.6 in |

P/N 2100301.00 GPE 5/8

P/N 2100401.00 GPS 1/2

WARNING

INSTALLATION OF THIS PRODUCT NEAR POWER LINES IS DANGEROUS. FOR YOUR SAFETY AND BEFORE YOU BEGIN INSTALLATION, READ THE SEPARATE SAFETY INFORMATION SHEET.





MADE IN ITALY since 1972

BOOMERANG A / W THUNDER

COMMON FEATURES

- # Balcony or temporary installation
- # Omnidirectional
- # Factory tuned at mid-band

- # **BOOMERANG A:** main whip made of aluminium alloy 6063 T-832 and tapered fiberglass radial
- # **BOOMERANG W:** tapered fiberglass whip and radial with
- # **THUNDER:** designed to work without Ground Plane
- # **UP-GRADED Boomerang:** power rate increased up to 300W, shorter radial

TECHNICAL DATA

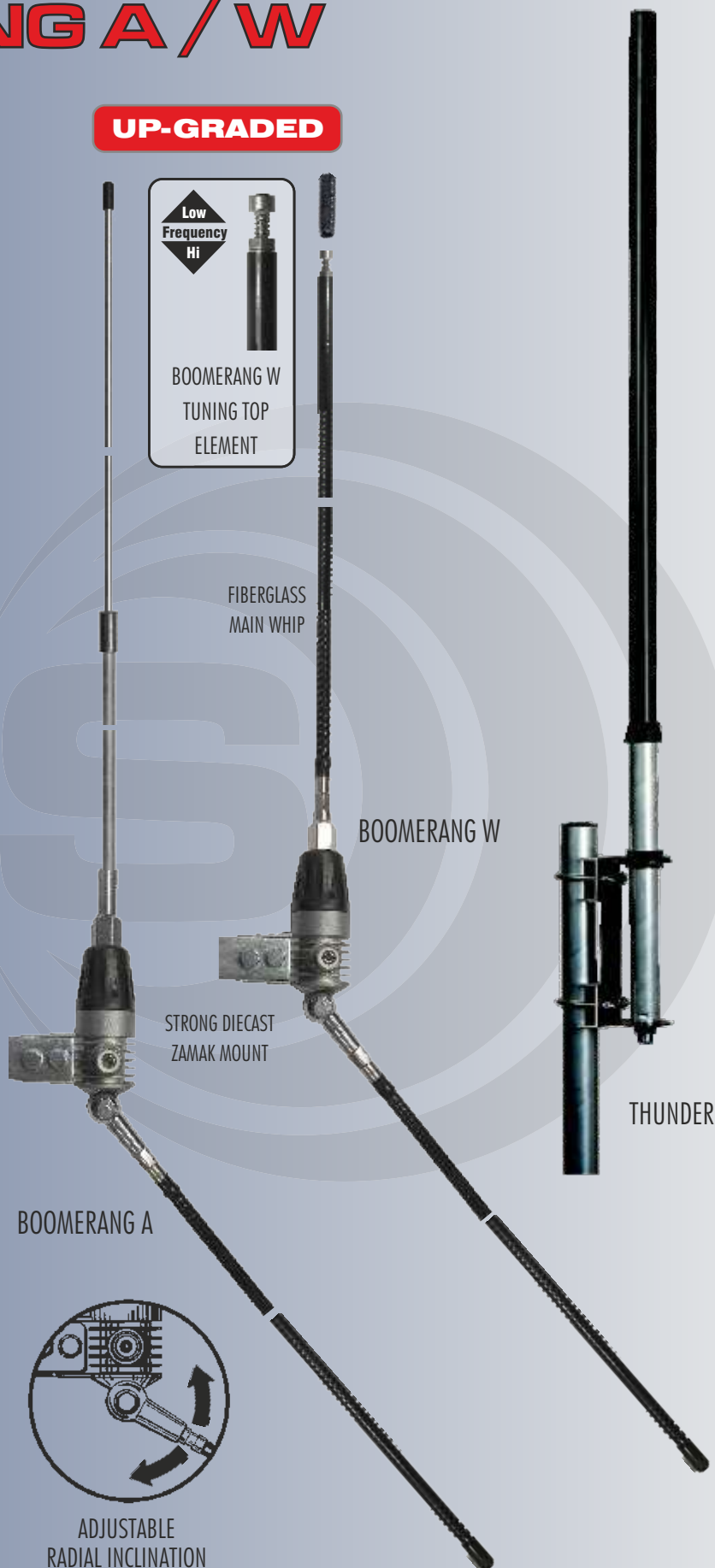
| | |
|---|--|
| Type: BOOMERANG A/W | 1/4 λ boomerang |
| THUNDER | 1/4 λ helical loaded dipole |
| Impedance: | 50 Ω |
| Frequency range: | 26.8 ... 27.6 MHz |
| Radiation: | omnidirectional |
| Polarization: | linear vertical |
| SWR @ res. freq.: | ≤ 1.2 |
| Max. power: | |
| BOOMERANG | 300Watts (CW) continuous, 900Watts (CW) short time |
| THUNDER | 100Watts (CW) continuous, 300Watts (CW) short time |
| Bandwidth @ SWR ≤ 2 : | |
| BOOMERANG A/W | ≥ 800 kHz |
| THUNDER | ≥ 5000 kHz |
| Gain: | 0 dBd, 2.15 dBi |
| Wind resistance: | 140 km/h, 87 mi/h |
| Height (approx.): | |
| BOOMERANG A/W | 3650 mm, 12 ft / 2230 mm, 7.3 ft |
| THUNDER | 960 mm, 3.1 ft |
| Weight (approx.): | |
| BOOMERANG A/W | 780 gr, 1.7 lb / 750 gr, 1.65 lb |
| THUNDER | 700 gr, 1.5 lb |
| Radial length (approx. BOOMERANG only): | 1330 mm, 4.35 ft |
| Mounting mast: | |
| BOOMERANG A/W | square or \varnothing max 42 mm, 1-5/8 in |
| THUNDER | \varnothing 25-32 mm, \varnothing 1-1.25 in |
| Connector: | UHF-female |

- P/N 2101101.00 BOOMERANG A
- P/N 2101115.00 BOOMERANG W
- P/N 2107902.00 THUNDER

WARNING

INSTALLATION OF THIS PRODUCT NEAR POWER LINES IS DANGEROUS. FOR YOUR SAFETY AND BEFORE YOU BEGIN INSTALLATION, READ THE SEPARATE SAFETY INFORMATION SHEET.

UP-GRADED





MADE IN ITALY since 1972

GPA 27-45 SIGNAL KEEPER

GPA 27-45

- # Tunable base station antenna
- # Unity-gain, Omnidirectional
- # High power handling
- # Low radiation angle for excellent DX
- # Made of aluminium alloy 6063 T-832

TECHNICAL DATA

Type: 1/4 λ ground plane
 Impedance: 50 Ω
 Frequency range: 27 ... 45 MHz tunable by diagram
 Radiation: omnidirectional
 Polarization: linear vertical
 SWR @ res. freq.: ≤ 1.2
 Max. power: ... 1000 Watts (CW) cont., 3000 Watts (CW) short time
 Bandwidth @ SWR ≤ 2 : ≥ 2500 kHz @ 27 MHz
 Gain: 0 dBd, 2.15 dBi
 Wind resistance: 130 km/h, 81 mi/h
 Height (approx.): 4730 mm, 15.5 ft
 Weight (approx.): 1250 gr, 2.75 lb
 Radial length (approx.): 2680 mm, 105.5 in
 Connector: UHF-female
 Mounting mast: $\varnothing 35-40$ mm, 1"3/8 - 1"9/16

P/N 2100801.00 GPA27-45

SIGNAL KEEPER

- # Omnidirectional, Compact dimensions
- # Factory tuned at mid-band
- # Made of aluminium alloy 6063 T-832

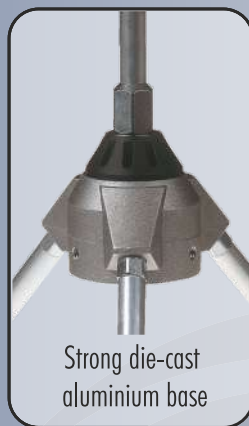
TECHNICAL DATA

Type: 1/4 λ base & radial loaded ground plane
 Impedance: 50 Ω
 Frequency range: 26 ... 28 MHz
 Radiation: omnidirectional
 Polarization: linear vertical
 SWR @ res. freq.: ≤ 1.2
 Max. power: 100 Watts (CW) cont., 300 Watts (CW) short time
 Bandwidth @ SWR ≤ 2 : ≥ 850 KHz
 Gain: 0 dBd, 2.15 dBi
 Wind resistance: 130 km/h, 81 mi/h
 Height (approx.): 2370 mm, 7.8 ft
 Weight (approx.): 640 gr, 1.4 lb
 Radial length (approx.): 640 mm, 25 in
 Connector: UHF-female
 Mounting mast: $\varnothing 35-40$ mm, $\varnothing 1.4-1.5$ in

P/N 2101301.00 SIGNAL KEEPER

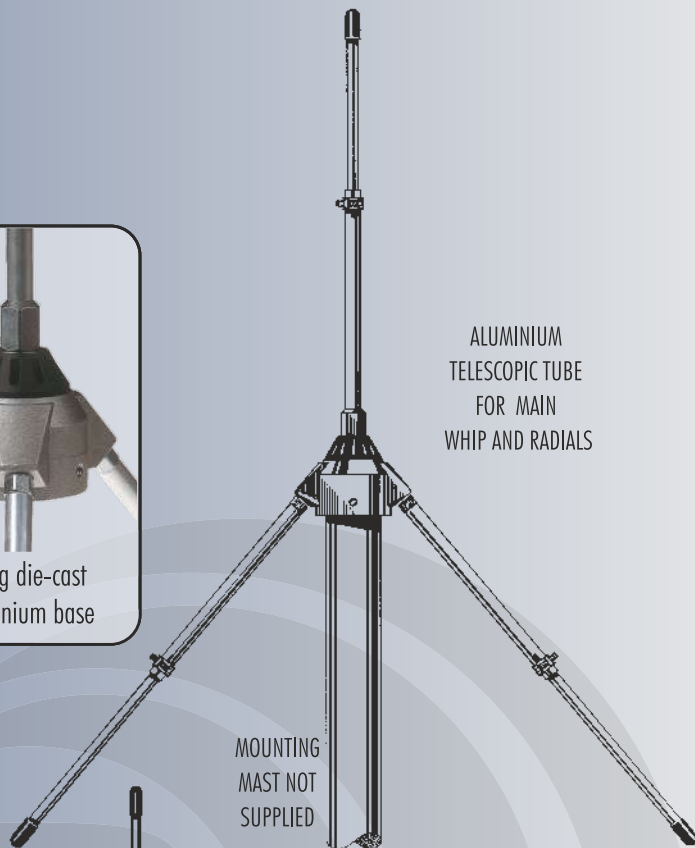
WARNING

INSTALLATION OF THIS PRODUCT NEAR POWER LINES IS DANGEROUS. FOR YOUR SAFETY AND BEFORE YOU BEGIN INSTALLATION, READ THE SEPARATE SAFETY INFORMATION SHEET.



Strong die-cast aluminium base

ALUMINIUM TELESCOPIC TUBE FOR MAIN WHIP AND RADIALS



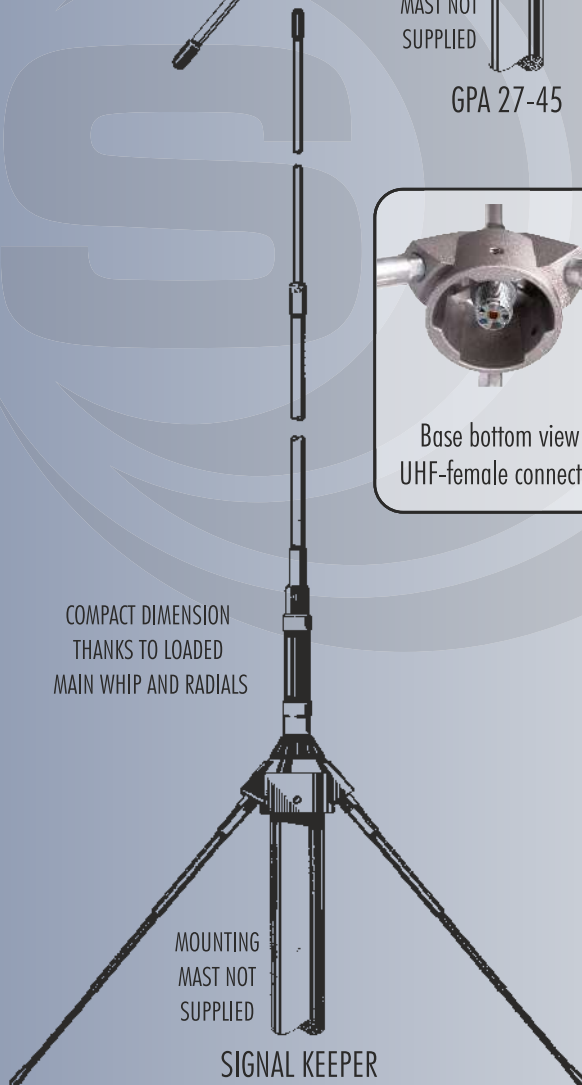
MOUNTING MAST NOT SUPPLIED

GPA 27-45



Base bottom view UHF-female connector

COMPACT DIMENSION THANKS TO LOADED MAIN WHIP AND RADIALS



MOUNTING MAST NOT SUPPLIED

SIGNAL KEEPER



SIDE MAST INSTALLATION ALLOWED BY OPTIONAL BRACKET FT-2 P/N 2510004.00



MADE IN ITALY since 1972

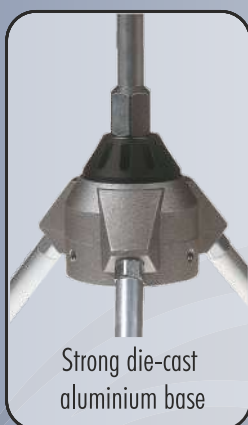
STARDUSTER M-400

- # Tunable base station antenna
- # Unity-gain, Omnidirectional
- # High power handling
- # Low radiation angle for excellent DX
- # Made of aluminium alloy 6063 T-832

TECHNICAL DATA

Type: 1/4 λ ground plane
 Impedance: 50 Ω
 Frequency range: 26.5 ... 30 MHz tunable by diagram
 Radiation: omnidirectional
 Polarization: linear vertical
 SWR @ res. freq.: ≤ 1.5
 Max. power: ... 1000 Watts (CW) cont., 3000 Watts (CW) short time
 Bandwidth @ SWR ≤ 2 : ≥ 2500 kHz @ 27 MHz
 Gain: 0 dBd, 2.15 dBi
 Wind resistance: 130 km/h, 81 mi/h
 Height (approx.): 5040 mm, 16.5 ft
 Weight (approx.): 1230 gr, 2.7 lb
 Radial length (approx.): 2690 mm, 105.5 in
 Connector: UHF-female
 Mounting mast: \varnothing 35-40 mm, 1"3/8 - 1"9/16

P/N 2103201.00 STARDUSTERM-400

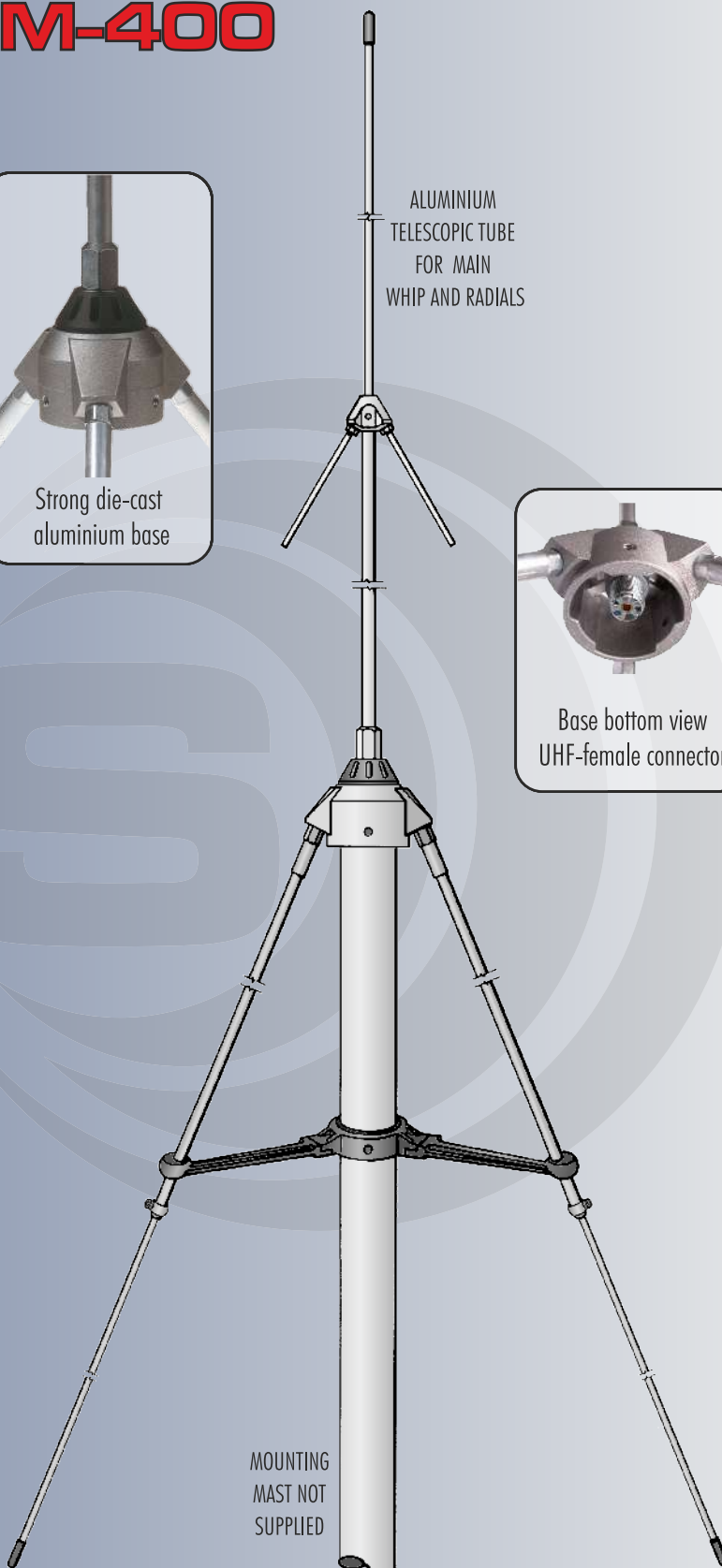


Strong die-cast aluminium base

ALUMINIUM TELESCOPIC TUBE FOR MAIN WHIP AND RADIALS



Base bottom view UHF-female connector



MOUNTING MAST NOT SUPPLIED

WARNING

INSTALLATION OF THIS PRODUCT NEAR POWER LINES IS DANGEROUS. FOR YOUR SAFETY AND BEFORE YOU BEGIN INSTALLATION, READ THE SEPARATE SAFETY INFORMATION SHEET.



MADE IN ITALY since 1972

SY-3 SY-4

FEATURES

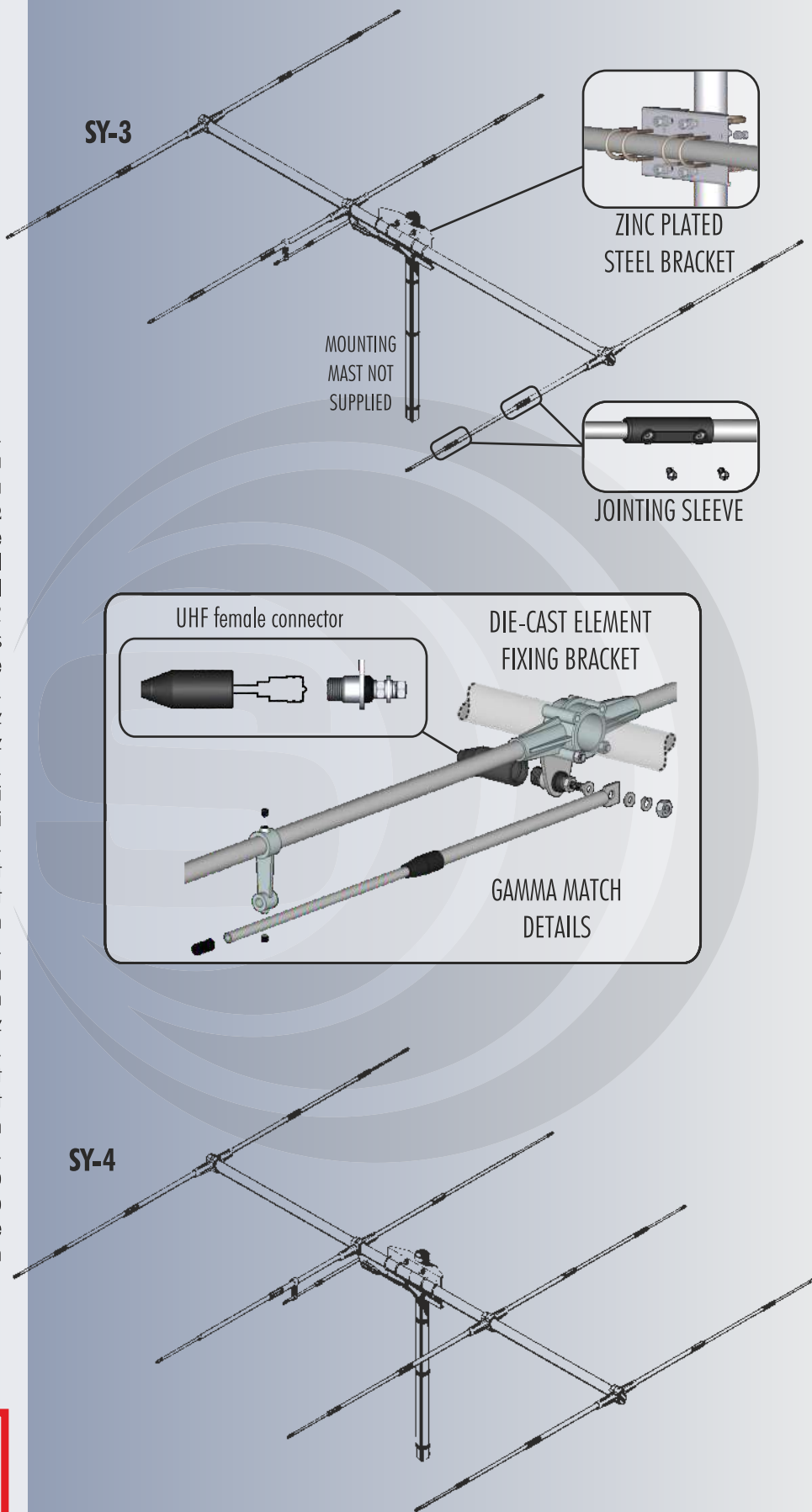
- # YAGI Base station antennas
- # Directional, High-gain
- # Horizontal polarization
- # High power handling capability
- # Fedded with Gamma Match system
- # Made of aluminium alloy 6063 T-832
- # Tunable from 26.5 to 30 MHz

TECHNICAL DATA

| | |
|---------------------------------|--|
| Type: | |
| SY-3 | 3 elements Yagi Antenna |
| SY-4 | 4 elements Yagi Antenna |
| Impedance: | 50 Ω |
| Frequency range: | 26.5 ... 30.0 MHz tunable |
| Radiation: | directional |
| Polarization: | linear horizontal |
| SWR @ res. freq.: | ≤ 1.2 |
| Max. power: | 1000 Watts (CW) continuous |
| | 3000 Watts (CW) short time |
| Bandwidth @ SWR ≤ 2: | |
| SY-3 | ≥ 1200 kHz @ 26.5 MHz |
| SY-4 | ≥ 850 kHz @ 26.5 MHz |
| Gain: | |
| SY-3 | 8.5 dBd, 10.65 dBi |
| SY-4 | 11 dBd, 13.15 dBi |
| Dimensions (approx.): | |
| SY-3 | 5942 x 2710 x 100 mm, 19.5 x 8.9 x 0.3 ft |
| SY-4 | 5846 x 4030 x 100 mm, 19.2 x 13.2 x 0.3 ft |
| Wind resistance: | 120 km/h, 75 mi/h |
| Boom length/diameter (approx.): | |
| SY-3 | 2710 mm, 8.9 ft / Ø 33 mm, 1.3 in |
| SY-4 | 4030 mm, 13.2 ft / Ø 33 mm, 1.3 in |
| Max. element length (approx.) | 5942 mm, 19.5 ft @ 26.5 MHz |
| Turning radius (approx.): | |
| SY-3 | 3300 mm, 10.8 ft |
| SY-4 | 3700 mm, 12.1 ft |
| Element diameter: | Ø 16-12-8 mm, Ø 0.6-0.47-0.3 in |
| Weight (approx.): | |
| SY-3 | 4700 gr, 10.4 lb |
| SY-4 | 6100 gr, 13.5 lb |
| Connector: | UHF-female |
| Mounting mast: | Ø 35-50 mm, Ø 1.3-1.9 in |

P/N 2105101.00 SY-3
P/N 2105201.00 SY-4

WARNING
INSTALLATION OF THIS PRODUCT NEAR POWER LINES IS DANGEROUS. FOR YOUR SAFETY AND BEFORE YOU BEGIN INSTALLATION, READ THE SEPARATE SAFETY INFORMATION SHEET.





MADE IN ITALY since 1972

SD-Dipole

FEATURES

- # Base station antenna, Unity-gain
- # Vertical or horizontal polarization
- # High power handling capability
- # Fedded with Gamma Match system
- # Made of aluminium alloy 6063 T-832
- # Tunable from 26.5 to 30 MHz

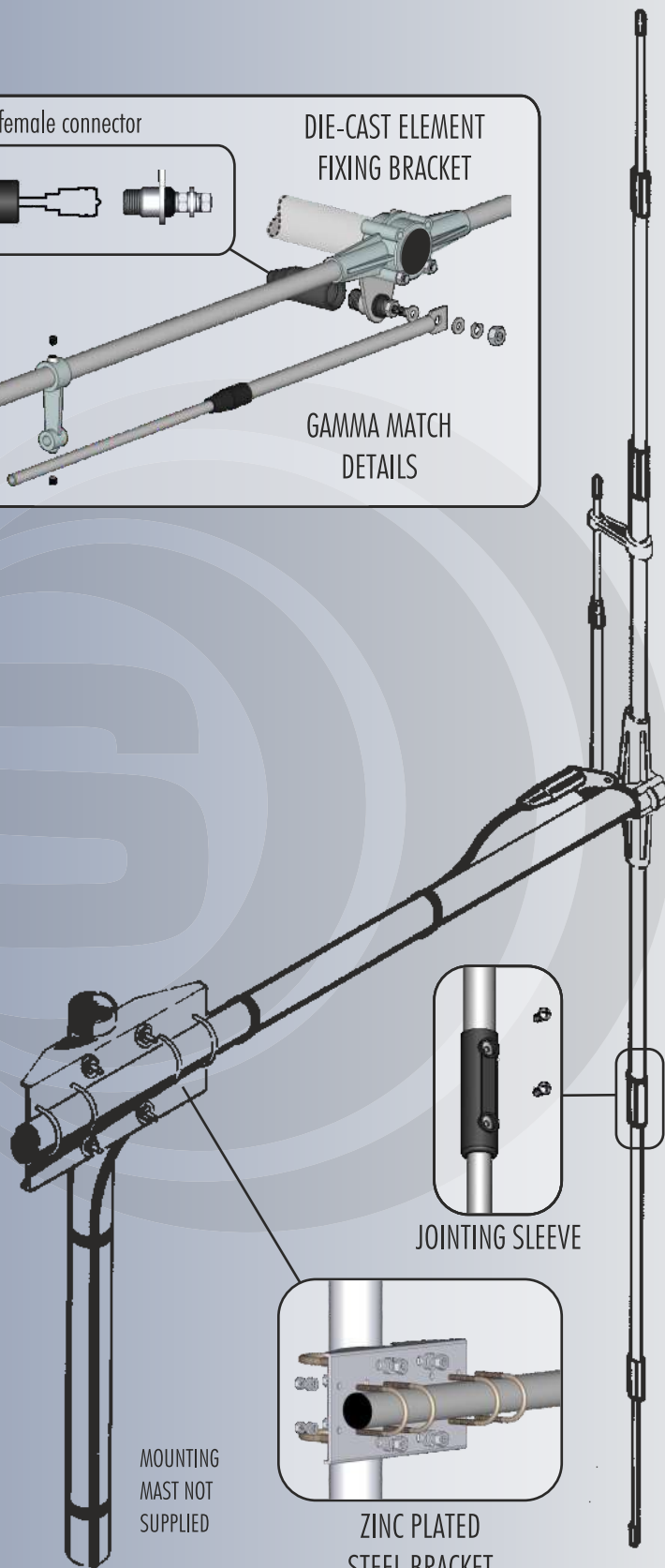
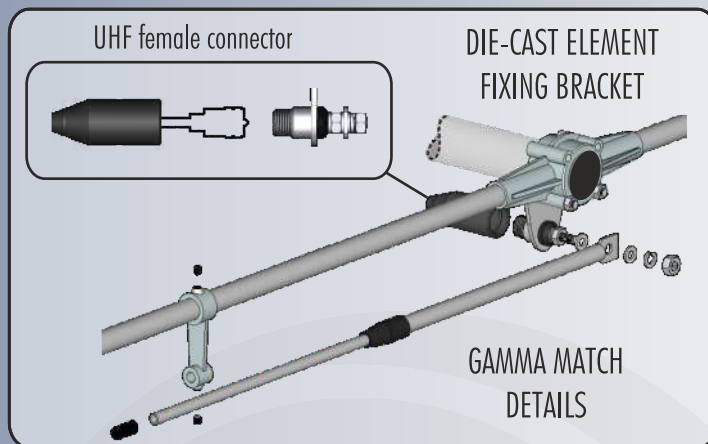
TECHNICAL DATA

Type: $\lambda/2$ Dipole
 Impedance: 50 Ω
 Frequency range: 26.5 ... 30.0 MHz tunable
 Radiation:
 Horizontal mounting directional
 Vertical mounting omnidirectional
 Polarization: linear vertical or horizontal
 SWR @ res. freq.: ≤ 1.1
 Max. power: 1000 Watts (CW) continuous
 3000 Watts (CW) short time
 Bandwidth @ SWR ≤ 2 : ≥ 3500 kHz @ 26.5 MHz
 Gain: 0 dBd, 2.15 dBi
 Wind resistance: 130 km/h, 81 mi/h
 Turning radius (approx.): 3200 mm, 10.5 ft
 Element diameter: $\varnothing 16-12-8$ mm, $\varnothing 0.6-0.47-0.3$ in
 Length (approx.): 5582 mm, 18.3 ft @ 26.5 MHz
 Weight (approx.): 2560 gr, 5.6 lb
 Connector: UHF-female
 Mounting mast: $\varnothing 35-50$ mm, $\varnothing 1.3-1.9$ in

P/N 2105301.00 SD-Dipole

WARNING

INSTALLATION OF THIS PRODUCT NEAR POWER LINES IS DANGEROUS. FOR YOUR SAFETY AND BEFORE YOU BEGIN INSTALLATION, READ THE SEPARATE SAFETY INFORMATION SHEET.





MADE IN ITALY since 1972

TURBO blue line

FEATURES

- # CB & 10m Mobile antennas
- # Tunable from 27 to 28.5 MHz
- # TURBO 800 S: 17/7 PH stainless steel spring whip
- # TURBO 1000, 2000, 3000: 17/7 PH tapered stainless steel whip
- # Metallic blue plastic coil cover and base, brass parts pearl finish chrome
- # 90° adjustable whip no tools required detachable for car-wash
- # DC-Ground protection
- # PL version (suffix PL) with a special base connection suitable for magnetic mount installation (no cable supplied)

REMARK: Each model has a specific BASE and COIL to match together for the best performance. BASES and COILS can't be mixed.

TECHNICAL DATA

Type: base loaded
 Impedance: 50 Ω
 Frequency range: 27 ... 28.5 MHz
 Polarization: linear vertical
 SWR @ res. freq.: ≤ 1.2
 Max. power: 200Watts (CW) continuous, 1000Watts (CW) short time
 Bandwidth @ SWR ≤ 2:

TURBO 800 S ≥ 430 kHz (40 channel)
 TURBO 1000 ≥ 660 kHz (60 channel)
 TURBO 2000 ≥ 1100 kHz (100 channel)
 TURBO 3000 ≥ 1600 kHz (140 channel)

Mounting:

TURBO series hole Ø 12.5 mm, 1/2 in
 TURBO PL series UHF-male (PL 259)

Cable length / Type:

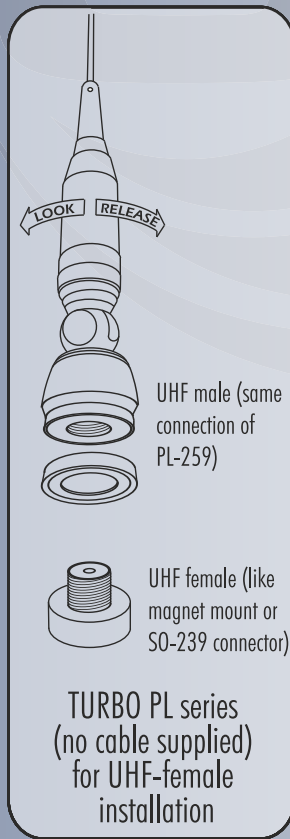
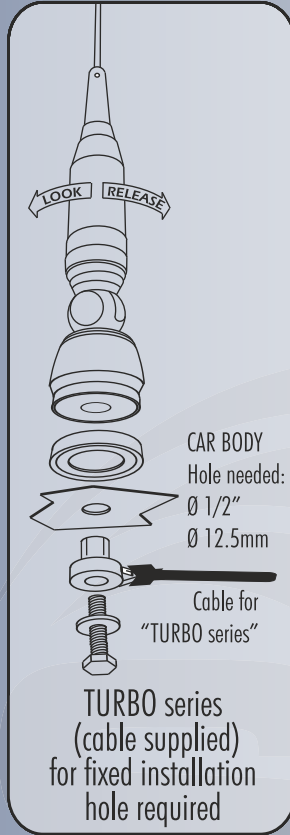
TURBO series 4 m, 13ft / RG 58
 TURBO PL series not supplied

Height (approx.):

TURBO 800 S / 800 S PL 840 mm, 2 3/4 ft
 TURBO 1000 / 1000 PL 1150 mm, 3 3/4 ft
 TURBO 2000 / 2000 PL 1450 mm, 4 3/4 ft
 TURBO 3000 / 3000 PL 1710 mm, 5.6 ft
 Weight (approx.): 580 gr, 1.3 lb

P/N 2201905.40 TURBO 800 S
 P/N 2202005.40 TURBO 1000
 P/N 2202105.40 TURBO 2000
 P/N 2202405.40 TURBO 3000

P/N 2201905.41 TURBO 800 S PL
 P/N 2202005.41 TURBO 1000 PL
 P/N 2202105.41 TURBO 2000 PL
 P/N 2202405.41 TURBO 3000 PL



90° ADJUSTABLE
no tools required

17/7 PH
TAPERED
STAINLESS
STEEL

17/7 PH
STAINLESS
STEEL SPRING
WITH NYLON
REINFORCE





MADE IN ITALY since 1972

PERFORMER series

FEATURES

- # CB & 10m Mobile antenna
- # Tunable from 27 to 28.5 MHz
- # 17/7 PH tapered stainless steel whip
- # 180° adjustable whip no tools required detachable for car-wash
- # DC-Ground protection
- # PL version (suffix PL) with a special base connection suitable for magnetic mount installation (no cable supplied)

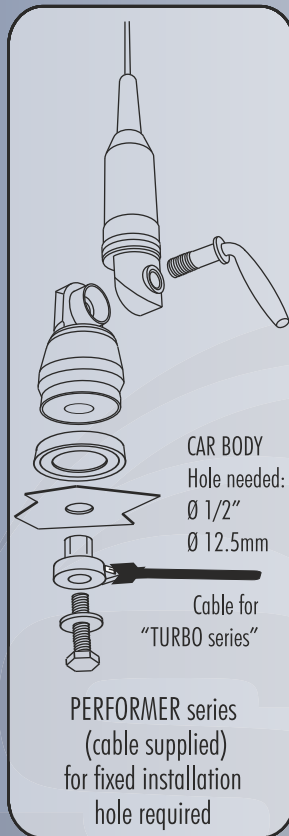
REMARK: Each model has a specific BASE and COIL to match together for the best performance. BASES and COILS can't be mixed.

TECHNICAL DATA

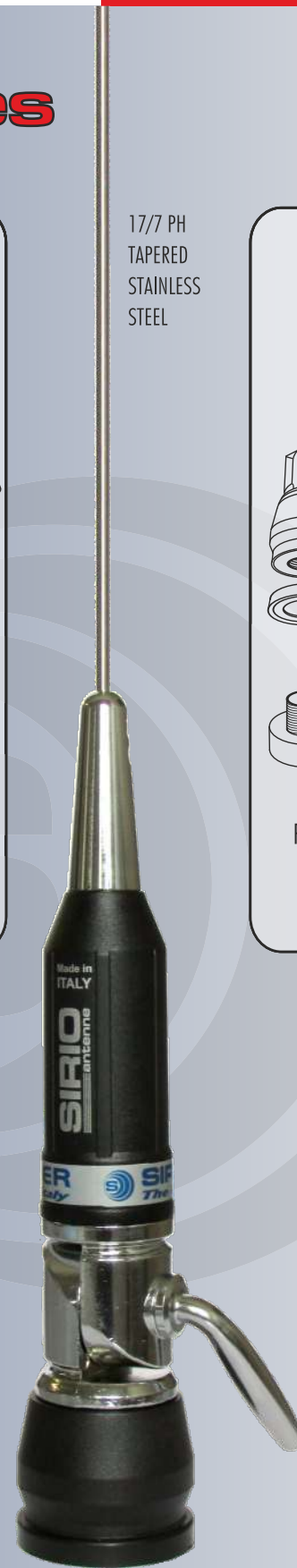
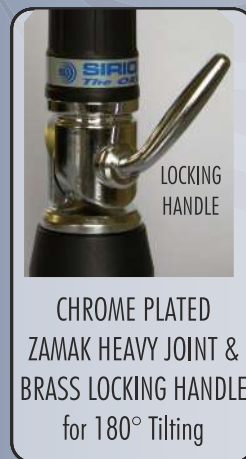
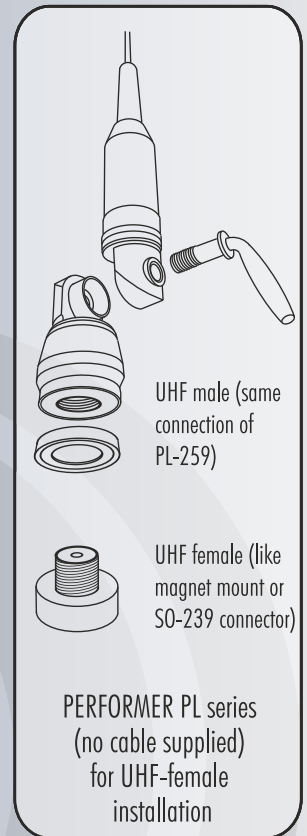
Type: base loaded
 Impedance: 50 Ω
 Frequency range: 27 ... 28.5 MHz
 Polarization: linear vertical
 SWR @ res. freq.: ≤ 1.2
 Max. power: 200 Watts (CW) continuous
 1000 Watts (CW) short time
 Bandwidth @ SWR ≤ 2:
 PERFORMER P-600 ≥ 680 kHz (60 channel)
 PERFORMER P-800 ≥ 1400 kHz (120 channel)
 PERFORMER P-1000 ≥ 2000 kHz (180 channel)
 Mounting:
 PERFORMER series hole Ø 12.5 mm, 0.5 in
 PERFORMER PL series UHF-male (PL 259)
 Cable length / Type:
 PERFORMER series 4 m, 13ft / RG 58
 PERFORMER PL series not supplied
 Height (approx.):
 PERFORMER P-600 1250 mm, 4.1 ft
 PERFORMER P-800 1650 mm, 5.4 ft
 PERFORMER P-1000 1950 mm, 6.4 ft
 Weight (approx.): 600 gr, 1.3 lb

P/N 2218005.50 PERFORMER P-600
 P/N 2218105.50 PERFORMER P-800
 P/N 2218205.50 PERFORMER P-1000

P/N 2218005.51 PERFORMER P-600 PL
 P/N 2218105.51 PERFORMER P-800 PL
 P/N 2218205.51 PERFORMER P-1000 PL



17/7 PH
TAPERED
STAINLESS
STEEL



PERFORMER P-600
 PERFORMER P-800
 PERFORMER P-1000



MADE IN ITALY since 1972

PERFORMER 5000 LED PERFORMER 5000 TURBO 5000

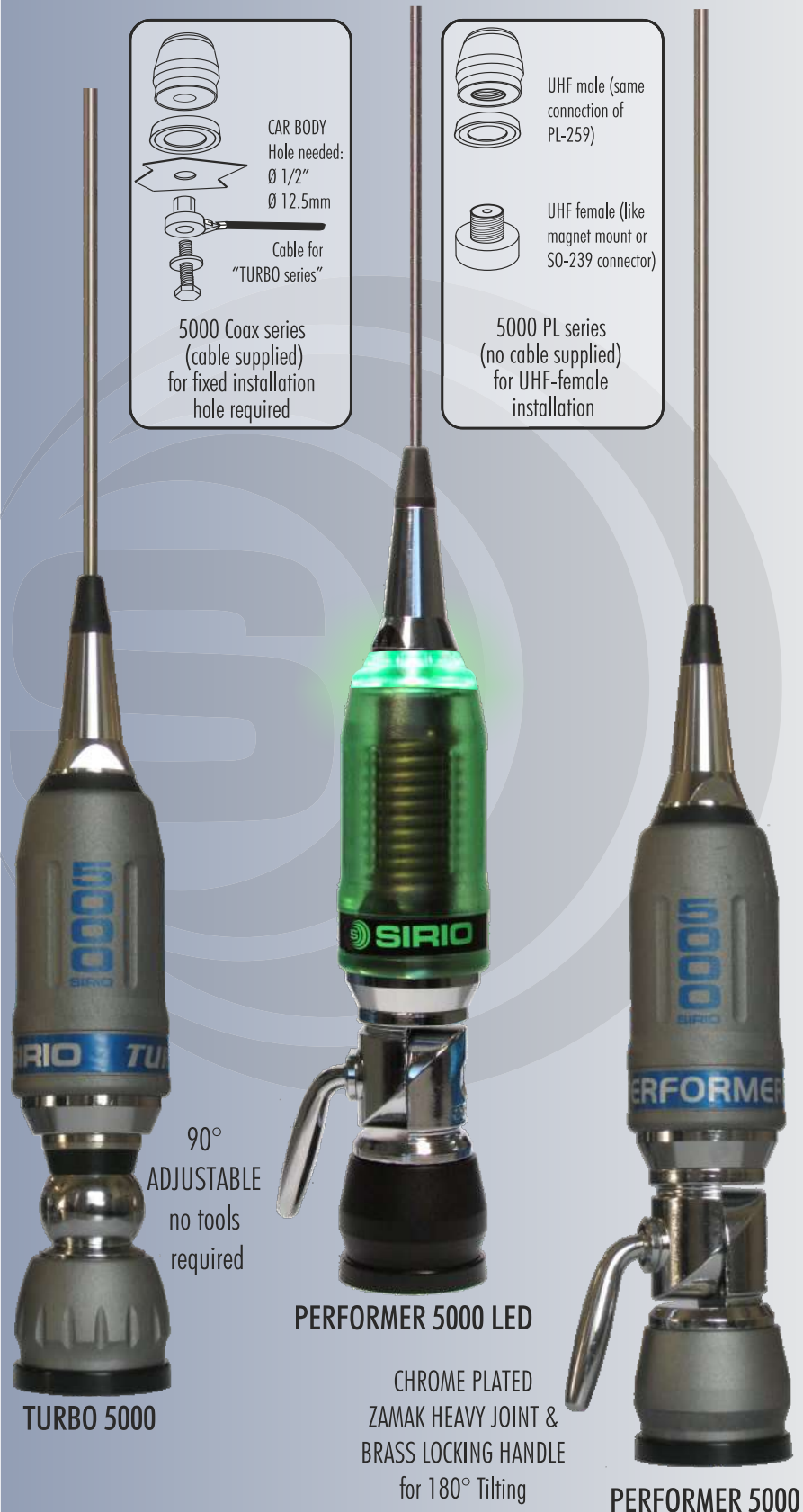
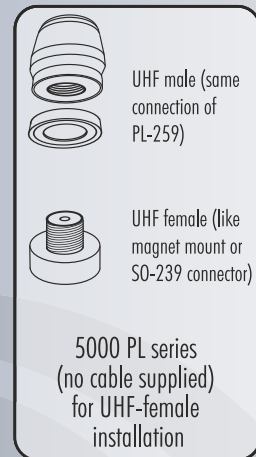
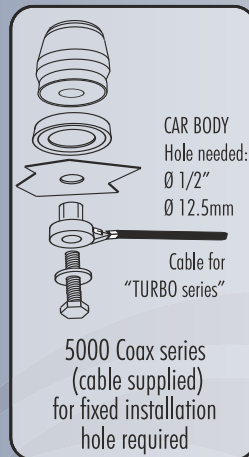
FEATURES

- # CB & 10 m Mobile antennas
- # Very High power handling
- # Tunable from 27 to 30 MHz
- # P5000 LED: Unique LED PCB that ligh up when transmit
- # DC-Ground protection
- # 17/7 PH tapered stainless steel whip
- # Whip detachable for car-wash
- # PL version (suffix PL) with a special base connection suitable for magnetic mount installation (no cable supplied)

TECHNICAL DATA

Type: base loaded
 Impedance: 50 Ω
 Frequency range: 27 ... 30 MHz
 Polarization: linear vertical
 SWR @ res. freq.: ≤ 1.2
 Max. power: 1500 Watts (CW) continuous
 5000 Watts (CW) short time
 Bandwidth @ SWR ≤ 2: ≥ 2300 kHz (200 channel)
 Mounting:
 TURBO-PERFORMER 5000 Coax hole Ø 12.5 mm, Ø 1/2 in
 TURBO-PERFORMER 5000 PL UHF-male (PL 259)
 Cable length / Type:
 PL version not supplied
 Coax version: .. 4m, 13ft/standard RG58 (max power up to 600 Watts)
 Height (approx.): 1965 mm, 6.4 ft
 Weight (approx.): 650 gr, 1.4 lb

- P/N 2218505.50/LED PERFORMER-5000 LED (stand. cable)
- P/N 2218505.51/LED PERFORMER-5000 PL LED
- P/N 2218505.50 PERFORMER-5000 (standard cable)
- P/N 2218505.51 PERFORMER-5000 PL
- P/N 2202205.40 TURBO-5000 (standard cable)
- P/N 2202205.43 TURBO-5000 PL





MADE IN ITALY since 1972

PERFORMER P2000

FEATURES

- # CB & 10 m Mobile antennas
- # Very High power handling
- # Tunable from 27 to 30 MHz
- # DC-Ground protection
- # 17/7 PH tapered stainless steel whip
- # PL version (suffix PL) with a special base connection suitable for magnetic mount installation (no cable supplied)

TECHNICAL DATA

Type: base loaded
 Impedance: 50 Ω
 Frequency range: 27 ... 30 MHz
 Polarization: linear vertical
 SWR @ res. freq.: ≤ 1.2
 Max. power: 2000 Watts (CW) Duty Cycle 5' on-5' off
 Bandwidth @ SWR ≤ 2: ≥ 1800 kHz (160 channel)
 Mounting:
 PERFORMER P2000 Coax hole Ø 12.5 mm, Ø 1/2 in
 PERFORMER P2000 PL UHF-male (PL 259)
 Cable length / Type:
 PL version not supplied
 Coax version: .. 4m, 13ft/standard RG58 (max power up to 600 Watts)
 Height (approx.): 1920 mm, 6.3 ft
 Weight (approx.): 730 gr, 1.6 lb

P/N 2218305.50 PERFORMER P2000 coax (standard cable)
 P/N 2218305.51 PERFORMER P2000 PL

P2000 3/8

FEATURES

- # CB & 10 m Trucker antenna
- # 17/7 PH Tapered whip 1.8m / 71"
- # 200mm / 8" Stainless Steel Shaft
- # Very high Power Handling capability

TECHNICAL DATA

Type: Trucker Antenna
 Impedance: 50 Ω
 Frequency range: 27 ... 30 MHz
 Polarization: linear vertical
 SWR @ res. freq.: ≤ 1.2
 Max. power: 1500 Watts (CW) continuous
 5000 Watts (CW) short time
 Bandwidth @ SWR ≤ 2: ≥ 2600 kHz (230 channel)
 Mounting: both model 3/8" x 24 thread
 Shaft version: shaft 200mm, 8"
 Cable length / Type: not supplied
 Height (approx.): 2080 mm, 6.8 ft
 Weight (approx.): 440 gr, 0.97 lb

P/N 2418305.03 PERFORMER P2000 3/8 w/shaft




PERFORMER P2000

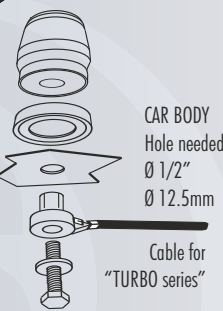


OPTIONAL HI-POWER CABLE
max power up to 2000 Watts
4m, 13 ft / RG 303 PTFE cable
P/N 2509605.00

HI-POWER MATCHING COIL




Low loss dielectric support.
Air wound big section copper wire
Ø 2.5mm
AWG 10



CAR BODY
Hole needed:
Ø 1/2"
Ø 12.5mm

Cable for "TURBO series"

P2000 Coax (cable supplied) for fixed installation hole required



UHF male (same connection of PL-259)

UHF female (like magnet mount or SO-239 connector)

P2000 PL (no cable supplied) for UHF-female installation



PERFORMER P2000 3/8



Optional "CB-HDS" 3/8 to SO-239
P/N 2508106.00



MADE IN ITALY since 1972

PERFORMER 5000 3/8

FEATURES

- # CB & 10 m Mobile antennas
- # Overall Height: 2.08m / 6.8'
- # 17/7 PH Tapered whip 1.8m / 71"
- # Shaft version: 200mm / 8" Stainless Steel Shaft
- # P5000 3/8 LED: Unique LED PCB that lighth up when transmit
- # Very high Power Handling capability
- # Low Loss Coil Made of 10 AWG / 2.5mm copper wire
- # Chrome plated brass parts CNC machined
- # Fully Designed & Manufactured in Italy

TECHNICAL DATA

Type: Trucker Antenna
 Impedance: 50 Ω
 Frequency range: 27 ... 30 MHz
 Polarization: linear vertical
 SWR @ res. freq.: ≤ 1.2
 Max. power: 1500 Watts (CW) continuous
 5000 Watts (CW) short time
 Bandwidth @ SWR ≤ 2: ≥ 2600 kHz (230 channel)
 Mounting: both model 3/8" x 24 thread
 Shaft version: shaft 200mm, 8"
 Cable length / Type: not supplied
 Height (approx.): 2080 mm, 6.8 ft
 Weight (approx.): 480 gr, 1.06 lb

P/N 2418505.03/LED PERFORMER 5000 3/8 LED w/shaft
 P/N 2418505.03 PERFORMER 5000 3/8 w/shaft
 P/N 2418505.03/A PERFORMER 5000 3/8 w/o shaft

SPECIAL DESIGN FOR THE USA



CONNECTION 3/8 x 24 THREADS



200mm, 8" STAINLESS STEEL SHAFT



WITH CHROMED BRASS FIXING NUT

HI-POWER MATCHING COIL



Low loss dielectric support.
 Air wound big section copper wire
 Ø 2.5mm AWG 10



Optional "CB-HDS"
 3/8 to SO-239
 P/N 2508106.00



MADE IN ITALY since 1972

BULL Trucker

FEATURES

- # Very High Power CB & 10 m Trucker and Mobile antennas
- # Exclusive LED PCB inside that's light Up when transmitting
- # 17/7 PH tapered whip w/metallic cap
- # Low-Loss High "Q" Air Wound Coil Design of 48mm/1.9" Uses 3mm/9-AWG wire
- # Coil design without soldering points, all junctions are screwed on
- # NOAA Weather Alert Reception capability
- # Use as a Single Antenna or Twin Co-Phased

TECHNICAL DATA

| | |
|---|----------------------------------|
| Type: | Mobile Antenna |
| Impedance: | 50 Ω |
| Frequency range: | |
| BULL 3000/5000 Trucker 3/8" | 26.5 ... 30 MHz |
| BULL 3000/5000 Trucker PL/coax | 27 ... 30 MHz |
| Polarization: | linear vertical |
| SWR @ res. freq.: | ≤ 1.2 |
| Max. power: | |
| BULL 3000 Trucker series | 3500 Watts (ICAS) |
| BULL 5000 Trucker series | 5000 Watts (ICAS) |
| Bandwidth @ SWR ≤ 2: | |
| BULL 3000 Trucker PL/coax | ≥ 1100 kHz (100 channel) |
| BULL 3000 Trucker 3/8" | ≥ 1500 kHz (130 channel) |
| BULL 5000 Trucker PL/coax | ≥ 1400 kHz (120 channel) |
| BULL 5000 Trucker 3/8" | ≥ 1900 kHz (170 channel) |
| Mounting: | |
| BULL 3000/5000 Trucker Coax | hole Ø 12.5 mm, 0.5 in |
| BULL 3000/5000 Trucker PL | UHF-male (PL 259) |
| BULL 3000/5000 Trucker 3/8" | 3/8"x24 thread w/shaft 200mm, 8" |
| Cable lenght / Type: | |
| BULL 3000/5000 Trucker Coax | |
| standard cable max power up to 600 Watts: | 4 m, 13 ft / RG 58 |
| BULL 3000/5000 Trucker PL or 3/8" | not supplied |
| Height (approx.): | |
| BULL 3000 Trucker PL/coax | 1445 mm, 4.7 ft |
| BULL 3000 Trucker 3/8" | 1600 mm, 5.2 ft |
| BULL 5000 Trucker PL/coax | 1645 mm, 5.4 ft |
| BULL 5000 Trucker 3/8" | 1800 mm, 5.9 ft |
| Weight (approx.): | 440 gr, 0.96 lb |

| | |
|----------------|---|
| P/N 2218605.50 | BULL 3000 Trucker Coax (cable standard) |
| P/N 2218605.51 | BULL 3000 Trucker PL |
| P/N 2418605.03 | BULL 3000 Trucker 3/8" |

| | |
|----------------|---|
| P/N 2218705.50 | BULL 5000 Trucker Coax (cable standard) |
| P/N 2218705.51 | BULL 5000 Trucker PL |
| P/N 2418705.03 | BULL 5000 Trucker 3/8" |

Ø 3mm/0.12"
17/7 PH Stainless steel tapered whip
BT 3000: 1.3m/51"
BT 5000: 1.5m/59"

Water-proof EPDM rubber gasket

Whip joint made of chromed brass CNC machined

Transparent coil cover with lights on when transmitting

Black plastic base with PCB LED inside

Chromed brass part

200mm, 8" Stainless steel shaft

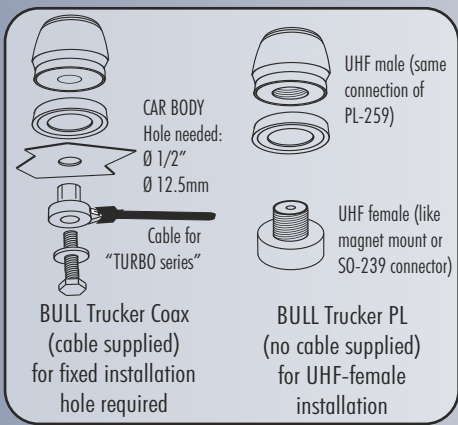
HI-POWER LOW LOSS COIL

Optional "CB-HDS" 3/8 to SO-239 P/N 2508106.00

Connection 3/8"x24 threads with chromed brass fixing nut

BULL 3000/5000 Trucker 3/8"

BULL 3000/5000 Trucker PL/coax





MADE IN ITALY since 1972

FLEX-LOG

FEATURES

- # CB Mobile antennas
- # Exclusive Logarithmic pitch winding to reduce heat and hot-spot loss (Patent Pending)
- # Flexible fiberglass rod (Ø7mm, 1/4")
- # Real input power guaranteed

TECHNICAL DATA

Type: .. Ø0.63mm AWG-22 single wire winding logarithmic loaded
 Impedance: 50 Ω
 Frequency range: 26.9 ... 27.5 MHz
 Polarization: linear vertical
 SWR @ res. freq.: FLEX-LOG 3 / FLEX-LOG 4 ≤ 1.4 / ≤ 1.2
 Max. power:
 FLEX-LOG 3 ... 100Watts (CW) continuous, 300Watts (CW) short time
 FLEX-LOG 4 ... 250Watts (CW) continuous, 750Watts (CW) short time
 Bandwidth @ SWR ≤ 2:
 FLEX-LOG 3 / FLEX-LOG 4: ≥ 600 kHz / ≥ 1000 kHz
 Height (approx.):
 FLEX-LOG 3 / FLEX-LOG 4: 880 mm, 2.9 ft / 1260 mm, 4.1 ft
 Weight (approx):
 FLEX-LOG 3 / FLEX-LOG 4: 135gr, 0.3 lb / 175gr, 0.4 lb

P/N 2407915.03 FLEX-LOG 3

P/N 2408015.03 FLEX-LOG 4

TWIN-LOG

FEATURES

- # CB Mobile antennas
- # The Exclusive Parallel Connected Twin Wire and the Logarithmic pitch winding to reduce RF resistance, heat loss and doubles the power rate (Patent Pending)
- # Heavy duty fiberglass rod (Ø9.2mm, 3/8")
- # Real input power guaranteed

TECHNICAL DATA

Type: Ø1mm AWG-18 Twin wire winding logarithmic loaded
 Impedance: 50 Ω
 Frequency range: 26.7 ... 27.7 MHz
 Polarization: linear vertical
 SWR @ res. freq.: TWIN-LOG 3 / 4 / 5 ≤ 1.5 / ≤ 1.3 / ≤ 1.2
 Max. power:
 TWIN-LOG 3 .. 300Watts (CW) continuous, 900Watts (CW) short time
 TWIN-LOG 4 . 500Watts (CW) continuous, 1500Watts (CW) short time
 TWIN-LOG 5 1000Watts (CW) cont., 3000Watts (CW) short time
 Bandwidth @ SWR ≤ 2:
 TWIN-LOG 3 / 4 / 5 ≥ 600 kHz / ≥ 1100 kHz / ≥ 1500 kHz
 Height (approx.):
 TWIN-LOG 3 / 4 / 5 945mm, 3ft / 1250mm, 4ft / 1475mm, 4.75ft
 Weight (approx):
 TWIN-LOG 3 / 4 / 5 .. 300gr, 0.66lb / 350gr, 0.77lb / 390gr, 0.96lb

P/N 2408115.03 TWIN-LOG 3

P/N 2408215.03 TWIN-LOG 4

P/N 2408315.03 TWIN-LOG 5

SPECIAL DESIGN FOR THE USA



FLEX-LOG

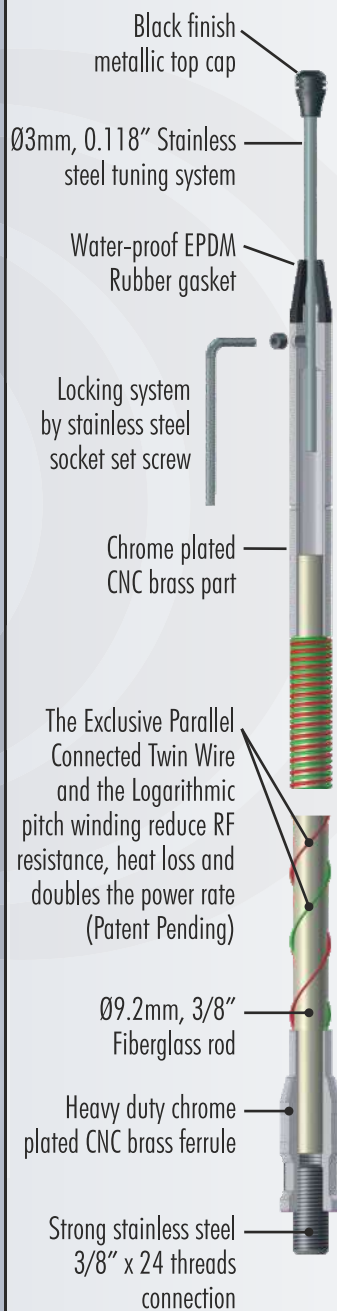


Optional "CB-HDS"
3/8 to SO-239
P/N 2508106.00

REAL HI-POWER HANDLING

3/8" x 24 threads connection

TWIN-LOG Technical Details



TWIN-LOG



MADE IN ITALY since 1972

MEGAWATT series HI-POWER series

FEATURES

- # CB & 10 m Mobile antennas
- # High power handling
- # Tunable from 27 to 30 MHz
- # DC-Ground protection
- # 17/7 PH tapered stainless steel whip
- # 180° adjustable whip (not for 4000R)
- # All models can be mounted on magnetic mount

TECHNICAL DATA

Type: base loaded
 Impedance: 50 Ω
 Frequency range: 27 ... 30 MHz
 Polarization: linear vertical
 SWR @ res. freq.: ≤ 1.2
 Max. power:
 3000 series 400 Watts (CW) continuous
 1200 Watts (CW) short time
 4000 series 600 Watts (CW) continuous
 1800 Watts (CW) short time
 Bandwidth @ SWR ≤ 2:
 3000 series ≥ 1890 kHz (170 channel)
 4000 series ≥ 2580 kHz (230 channel)
 Mounting:
 PL series: Whip only, connection UHF-male (PL 259)
 N series: Whip + cable + N-PL mount, hole 12.5mm, 1/2in
 Height (approx.):
 3000 series 1740 mm, 5.7 ft
 4000 series 2030 mm, 6.7 ft
 Weight (approx.): 480gr, 1.06 lb

- | | |
|---------------------|------------------------------------|
| P/N 2202305.05 | HI-POWER 3000 PL |
| P/N 2202505.05 | HI-POWER 4000 PL |
| P/N 2202305.23 | HI-POWER 3000 N |
| P/N 2202505.23 | HI-POWER 4000 N |
| | |
| P/N 2211505.05 | MEGAWATT 3000 PL |
| P/N 2211605.05 | MEGAWATT 4000 PL |
| P/N 2211605.05/RIG | MEGAWATT 4000 PL R (rigid version) |
| P/N 2211505.23 | MEGAWATT 3000 N |
| P/N 2211605.23 | MEGAWATT 4000 N |
| | |
| P/N 2211505.05/SILV | MEGAWATT 3000 PL SILVER |
| P/N 2211605.05/SILV | MEGAWATT 4000 PL SILVER |
| P/N 2211505.23/SILV | MEGAWATT 3000 N SILVER |
| P/N 2211605.23/SILV | MEGAWATT 4000 N SILVER |



WHIP ANGLE ADJUST
WITH SPECIAL KEY

DIFFERENCE BETWEEN SERIES

| | |
|--|--|
| <p>PL-Series (whip only)</p>  <p>To mount on UHF female (like magnet mount or SO-239 connector)</p> | <p>N-Series (supplied with mount & cable)</p>  <p>+ N-PL mount</p>  <p>+ N cable</p>  <p>(plastic cap)</p>  |
|--|--|



MEGAWATT PL



MEGAWATT PL R
(rigid version)

MEGAWATT PL
SILVER COVER



HI-POWER PL



T series

FEATURES

- # CB Mobile antennas
- # T 27: Slim line central loaded with spring
- # T3 27: Ø7mm 0.27" Fiberglass whip logarithmic loaded, with heavy duty spring
- # T3 27 M6: Bottom joint M6 female
- # T3 27 MAG, SUPER T3 MAG: Supplied with magnetic mount

TECHNICAL DATA

Type:

T 27 central loaded

T3 27 series logarithmic loaded

Impedance: 50 Ω

Frequency range:

T 27 26.5 ... 28.5 MHz tunable

T3 27 series 26.9 ... 27.5 MHz tunable

Polarization: linear vertical

SWR @ res. freq.: ≤ 1.2

Max. power: 20 Watt(CW) continuous, 100 Watts (CW) short time

Bandwidth @ SWR ≤ 2:

T 27 ≥ 440 kHz (40 channel)

T3 27 series ≥ 700 kHz (65 channel)

Height (approx.):

T 27 550 mm, 1.8 ft

T3 27 635 mm, 2.1 ft

T3 27 M6 580 mm, 1.9 ft

Weight (approx.):

T 27, T3 27 400 gr, 0.88 lb

T3 27 M6 200 gr, 0.44 lb

Mount type:

T 27, T3 27 "N" mount, hole Ø12.5mm, 1/2 in

T3 27 MAG PM-100 Magnetic mount

SUPER T3 MAG PM-125 Magnetic mount

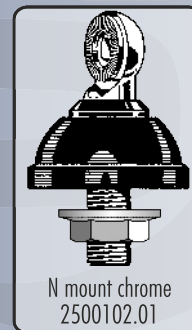
Cable length / type:

T 27, T3 27 4m, 13 ft / RG58

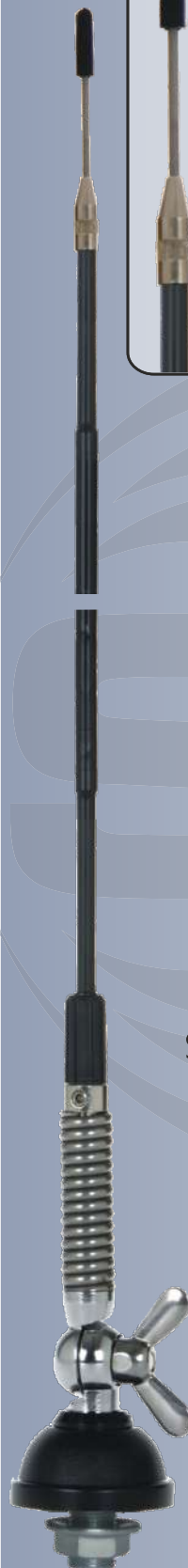
T3 27 MAG, SUPER T3 27 MAG 3.6m, 11.5ft / RG58

T3 27 M6 not supplied

- P/N 2201015.01 T 27
- P/N 2207015.01 T3 27
- P/N 2207015.61 T3 27 MAG (PM-100)
- P/N 2207015.63 SUPER T3 MAG (PM-125)
- P/N 2407015.06 T3 27 M6 (whip only)



STANDARD MOUNT



T 27



T3 27



MADE IN ITALY since 1972

NEW DELTA 27-95 NEW DELTA 27M-95

FEATURES

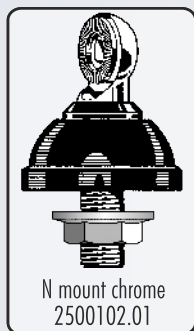
- # CB Mobile antennas
 - # Ø7mm 0.27" Fiberglass whip double pitch top loaded
 - # 180° adjustable whip
 - # Detachable for car-wash
 - # Suitable for magnetic mount installation
- # DELTA 27M-95: With heavy duty stainless steel spring Ø4.5mm AWG-5

TECHNICAL DATA

Type: double pitch top loaded
 Impedance: 50 Ω
 Frequency Range: 26.7... 27.3 MHz tunable
 Polarization: linear vertical
 SWR @ res. freq.: ≤ 1.2
 Max. power: 35 Watts (CW) continuous
 100 Watts (CW) short time
 Bandwidth @ SWR ≤ 2: ≥ 900 kHz (80 channel)
 Height (approx.): 950 mm, 3.1 ft
 Weight (approx.):
 NEW DELTA 27-95 390 gr, 0.9 lb
 NEW DELTA 27M-95 500 gr, 1.1 lb
 Standard mount: "N"
 Mounting hole: Ø 12.5 mm, 1/2 in
 Cable: 4m, 13 ft RG 58

P/N 2203315.01 NEW DELTA 27-95
 P/N 2203415.01 NEW DELTA 27M-95

STANDARD
MOUNT



NEW DELTA 27-95

NEW DELTA 27M-95



CARBONIUM 27 SUPER CARBONIUM 27

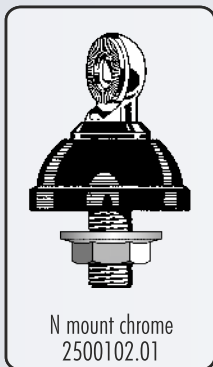
FEATURES

- # CB & 10m Mobile antennas
- # Tunable from 27 to 28.5 MHz
- # 17/7 PH tapered stainless steel whip
- # All metal parts are made of chromed and black chromed brass
- # 180° adjustable whip
- # Detachable for car-wash
- # Suitable for magnetic mount

TECHNICAL DATA

Type: base loaded
 Impedance: 50 Ω
 Frequency range: 27 ... 28.5 MHz
 Polarization: linear vertical
 SWR @ res. freq.: ≤ 1.2
 Max. Power:
 Carbonium 25 Watts (CW) continuous
 150 Watts (CW) short time
 Super Carbonium 35 Watts (CW) continuous
 250 Watts (CW) short time
 Bandwidth @ SWR ≤ 2:
 Carbonium: ≥ 1620 kHz (140 channel)
 Super Carbonium: ≥ 1850 kHz (170 channel)
 Cable: 4m, 13 ft / RG 58
 Height (approx.):
 Carbonium: 1130 mm, 3.7 ft
 Super Carbonium: 1400 mm, 4.6 ft
 Weight (approx.): 480 gr, 1.05 lb
 Standard mount: "N"
 Mounting hole: Ø 12.5 mm, 1/2 in

P/N 2204106.02 CARBONIUM 27
 P/N 2204206.01 SUPER CARBONIUM 27



CARBONIUM 27



SUPER CARBONIUM 27



MADE IN ITALY since 1972

OMEGA 27

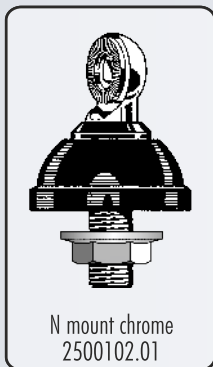
FEATURES

- # CB & 10m Mobile antennas
- # Tunable from 27 to 28.5 MHz
- # 17/7 PH tapered stainless steel whip
- # 180° adjustable whip
- # OMEGA 27 M6: bottom joint M6 female
- # Detachable for car-wash

TECHNICAL DATA

Type: base loaded
 Impedance: 50 Ω
 Frequency range: 27... 28.5 MHz
 Polarization: linear vertical
 SWR @ res. freq.: ≤ 1.2
 Max. Power 15 Watts (CW) continuous
 150 Watts (CW) short time
 Bandwidth @ SWR ≤ 2: ≥ 1300 kHz (120 channel)
 Height (approx.):
 OMEGA 27 970 mm, 3.2 ft
 OMEGA 27 radiator M6 945 mm, 3.1 ft
 Weight (approx.): 385 gr, 0.85 lb
 Mount type:
 OMEGA 27: "N" mount, hole Ø12.5mm, 1/2 in
 OMEGA 27 M6: M6 thread joint
 OMEGA 27 MAG: PM-100 S or PM-125 S magnetic mount
 Cable length / type:
 OMEGA 27: 4m, 13 ft / RG58
 OMEGA 27 M6: not supplied
 OMEGA 27 MAG: 3.6m, 11.8 ft / RG58

- P/N 2206306.02 OMEGA 27
- P/N 2206306.61 OMEGA 27 MAG (PM-100)
- P/N 2206306.64 OMEGA 27 MAG (PM-125)
- P/N 2406306.06 OMEGA 27 M6 (whip only)



STANDARD MOUNT



OMEGA 27



OMEGA 27 M6 (whip only)

Optional M6-male / M7-female Adaptor P/N 30.AD007.00/BLK



OMEGA 27 MAG

PM-125

PM-100



MADE IN ITALY since 1972

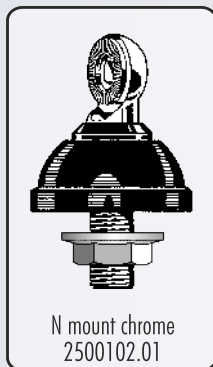
SUPER 9 SUPER 70 SUPER 900

- # CB & 10m Mobile antennas
- # Tunable from 27 to 28.5 MHz
- # 180° Adjustable whip
- # Detachable for car-wash
- # SUPER 9: safety set enclosed

TECHNICAL DATA

Type: base loaded
 Impedance: 50 Ω
 Frequency range: 27 ... 28.5 MHz
 Polarization: linear vertical
 SWR @ res. freq.: ≤ 1.2
 Max. power:
 SUPER 9 Blue Line 35 Watts (CW) continuous
 250 Watts (CW) short time;
 SUPER 70 Blue Line 15 Watts (CW) continuous
 150 Watts (CW) short time;
 SUPER 900 Blue Line 15 Watts (CW) continuous
 150 Watts (CW) short time;
 Bandwidth @ SWR ≤ 2:
 SUPER 9 Blue Line ≥ 1900 kHz (170 channel)
 SUPER 70 Blue Line ≥ 1200 kHz (110 channel)
 SUPER 900 Blue Line ≥ 1100 kHz (100 channel)
 Cable: 4m, 13 ft RG 58
 Height (approx.):
 SUPER 9 Blue Line 1550 mm, 5.0 ft
 SUPER 70 Blue Line 700 mm, 2.3 ft
 SUPER 900 Blue Line 780 mm, 2.5 ft
 Weight (approx.): 450 gr, 1 lb
 Standard mount: "N"
 Mounting hole: Ø 12.5 mm, 0.5 in

P/N 2230005.01/BLUE SUPER 9 Blue
 P/N 2230305.01/BLUE SUPER 70 Blue
 P/N 2229905.01/BLUE SUPER 900 Blue



STANDARD MOUNT

N mount chrome
2500102.01



SUPER 9:
SAFETY SET



SUPER 9 Blue



SUPER 70 Blue



SUPER 900 Blue

STAINLESS
STEEL SPRING
WITH NYLON
REINFORCE

TAPERED
STAINLESS
STEEL



MADE IN ITALY since 1972

TITANIUM series

FEATURES

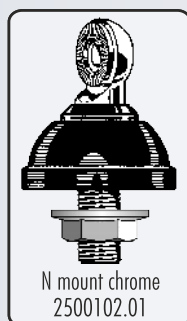
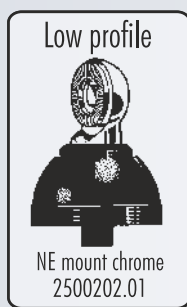
- # CB & 10m Mobile antennas
- # Tunable from 27 to 28.5 MHz
- # 180° adjustable whip
- # Detachable for car-wash
- # Suitable for magnetic mount

TECHNICAL DATA

Type: base loaded
 Impedance: 50 Ω
 Frequency range: 27... 28.5 MHz
 Polarization: linear vertical
 SWR @ res. freq.: ≤ 1.2
 Max. Power
 TITANIUM 800, TITANIUM 1000 15 Watts (CW) continuous
 150 Watts (CW) short time
 TITANIUM 1200 20 Watts (CW) continuous
 100 Watts (CW) short time
 TITANIUM 1500 Black 35 Watts (CW) continuous
 250 Watts (CW) short time
 Bandwidth @ SWR ≤ 2:
 TITANIUM 800 ≥ 1100 kHz (100 channel)
 TITANIUM 1000 ≥ 1200 kHz (110 channel)
 TITANIUM 1200 ≥ 1400 kHz (125 channel)
 TITANIUM 1500 Black ≥ 1600 kHz (140 channel)
 Height (approx.):
 TITANIUM 800 790 mm, 2.6 ft
 TITANIUM 1000 975 mm, 3.2 ft
 TITANIUM 1200 1215 mm, 4.0 ft
 TITANIUM 1500 Black 1420 mm, 4.6 ft
 Weight (approx.): 400 gr, 0.88 lb
 Mount type: "N" mount, hole Ø12.5mm, Ø1/2 in
 Cable length / type: 4m, 13 ft / RG58

P/N 2200605.01 or .07 TITANIUM 800 N or NE
 P/N 2204505.01 or .07 TITANIUM 1000 N or NE
 P/N 2204505.01/S or .07/S TITANIUM 1200 N or NE
 P/N 2204506.02 or .08 TITANIUM 1500 Black N or NE

P/N 2200605.61 TITANIUM 800 MAG
 P/N 2204505.61 TITANIUM 1000 MAG
 P/N 2204505.61/S TITANIUM 1200 MAG





MADE IN ITALY since 1972

AS series

- # CB & 10m base loaded mobile antennas
- # Tunable from 27 to 28.5 MHz
- # DC-Ground protection
- # 17/7 PH tapered stainless steel whip

TECHNICAL DATA

Type: base loaded
 Impedance: 50 Ω
 Frequency range: 27 ... 28.5 MHz
 Polarization: Linear vertical
 SWR @ res. freq.: ≤ 1.2
 Max. power:
 AS 100: 100 Watts (CW) continuous , 300 Watts (CW) short time
 AS 145: 150 Watts (CW) continuous , 450 Watts (CW) short time
 AS 170: 200 Watts (CW) continuous , 600 Watts (CW) short time
 Bandwidth @ SWR ≤ 2: AS 100 ≥ 580kHz (55 channel)
 AS 145: ≥ 1240kHz (110 channel)
 AS 170: ≥ 1940kHz (180 channel)
 Mounting:
 PL series: Whip only, connection UHF-male (PL 259)
 N series: Whip + cable + N-PL mount, hole 12.5mm, 1/2in
 AS-100 MAG: ... PM-100 PL, magnetic mount, 3.6 m / 11.8 ft RG58
 Height (approx.) AS 100 1020 mm, 3.3 ft
 AS 145 / AS 170 1400 mm, 4.6 ft / 1670 mm, 5.5 ft
 Weight (approx.) 240 gr, 0.53 lb

P/N 2209005.05 AS 100 PL
 P/N 2201405.05 AS 145 PL
 P/N 2201605.05 AS 170 PL

P/N 2209005.23 AS 100 N
 P/N 2201405.23 AS 145 N
 P/N 2201605.23 AS 170 N

P/N 2209005.61 AS 100 MAG

DIFFERENCE BETWEEN SERIES

PL-Series
(whip only)



To mount on
UHF female (like
magnet mount or
SO-239 connector)

N-Series
(supplied with
mount & cable)



+ N-PL mount



(plastic cap)

+ N cable



AS 100 PL
 AS 145 PL
 AS 170 PL



AS-100 MAG



MADE IN ITALY since 1972

NEW TITANIUM 3001 ML 145 MAG

FEATURES

- # CB & 10m Mobile antennas
- # Tunable from 27 to 28.5 MHz
- # 17/7 PH tapered stainless steel whip
- # ML 145 MAG: Supplied with stainless steel spring
- # TITANIUM 3001: 180° Adjustable whip
- # Detachable for car-wash
- # DC-Ground protection
- # Suitable for magnetic mount installation

TECHNICAL DATA

Type: base loaded
 Impedance: 50 Ω
 Frequency range: 27 ... 28.5 MHz
 Polarization: linear vertical
 SWR @ res. freq.: ≤ 1.4
 Max. power: 300 Watts (CW) continuous
 900 Watts (CW) short time
 Bandwidth @ SWR ≤ 2:
 ML 145 ≥ 1340 kHz (120 channel)
 NEW TITANIUM 3001 ≥ 1300 kHz (115 channel)
 Mounting:
 ML 145 PM-125 PL magnetic mount
 NEW TITANIUM 3001 MAG: PM-125 PL magnetic mount
 NEW T. 3001 PL: Whip only, connection UHF-male (PL 259)
 NEW T. 3001 N: Whip + cable + N-PL mount, hole 12.5mm, 1/2in
 Cable Length / Type:
 ML 145 MAG, NEW TITANIUM 3001 MAG: 3.6m, 11.8 ft / RG58
 NEW TITANIUM 3001 PL: not supplied
 NEW TITANIUM 3001 N: 4m, 13 ft / RG58
 Height (approx.):
 ML 145 1420 mm, 4.6 ft
 NEW TITANIUM 3001 1485 mm, 4.9 ft
 Weight (approx.): 310 gr, 0.68 lb

P/N 2211805.05 NEW TITANIUM 3001 PL
 P/N 2211805.23 NEW TITANIUM 3001 N
 P/N 2211805.63 NEW TITANIUM 3001 MAG

P/N 2201805.05 ML 145 PL
 P/N 2201805.23 ML 145 N
 P/N 2201805.63 ML 145 MAG

DIFFERENCE BETWEEN SERIES

PL-Series
(whip only)



To mount on UHF female (like magnet mount or SO-239 connector)

N-Series
(supplied with mount & cable)



+ N-PL mount



(plastic cap)

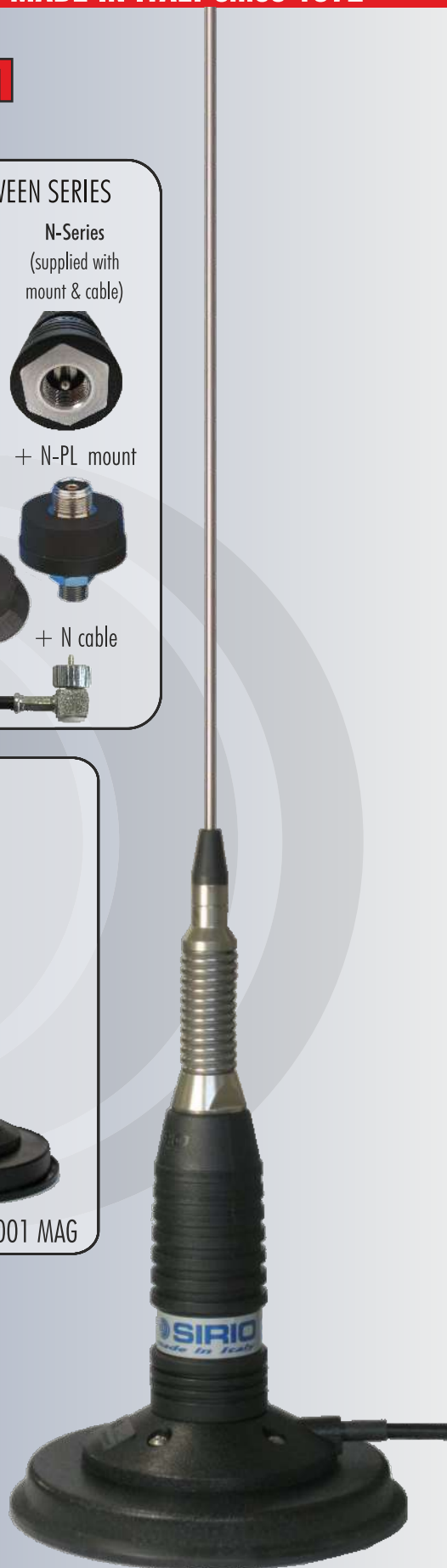
+ N cable



NEW TITANIUM 3001 MAG



NEW TITANIUM 3001



ML 145 MAG



MADE IN ITALY since 1972

SNAKE 27 MINI SNAKE 27

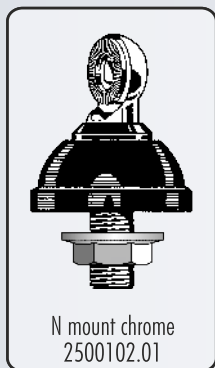
FEATURES

- # CB Mobile antenna
- # Tunable by acting on the metallic rings
- # SNAKE: 17/7 PH tapered black chromed stainless steel whip
- # MINI SNAKE: 17/7 PH cylindrical black chromed stainless steel whip
- # 180° adjustable whip
- # M6 radiators: bottom joint M6 female
- # Detachable for car-wash
- # Suitable for magnetic mount

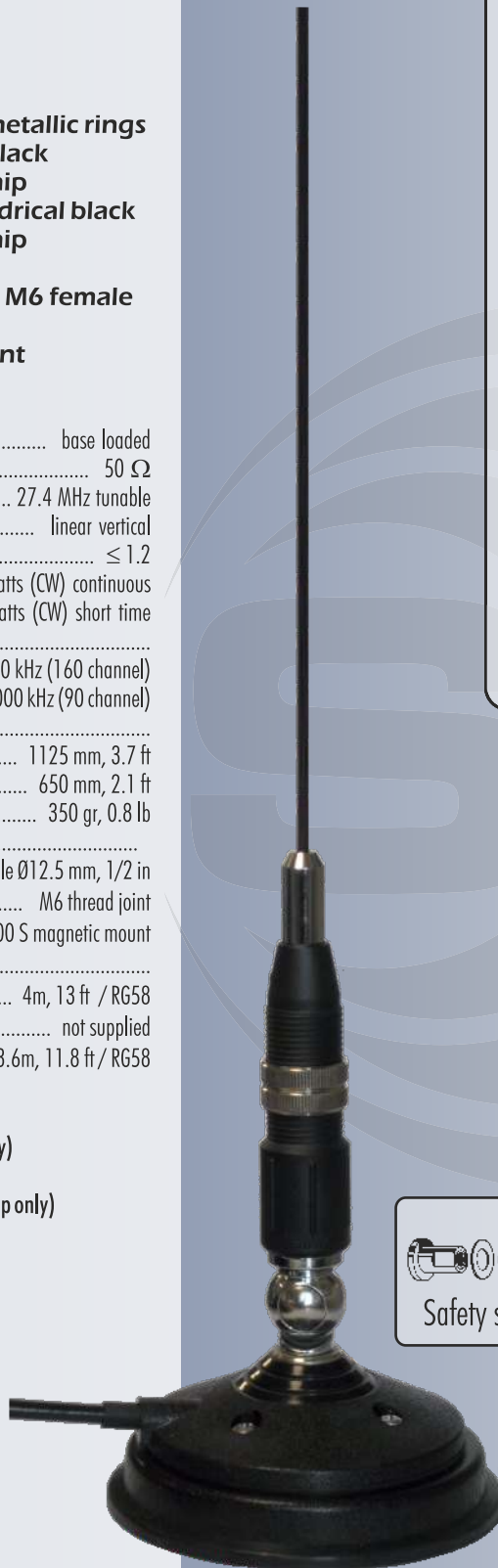
TECHNICAL DATA

Type: base loaded
 Impedance: 50 Ω
 Frequency range: 26.5 ... 27.4 MHz tunable
 Polarization: linear vertical
 SWR @ res. freq.: ≤ 1.2
 Max. power: 10 Watts (CW) continuous
 40 Watts (CW) short time
 Bandwidth @ SWR ≤ 2:
 SNAKE 27, SNAKE 27 M6: ≥ 1800 kHz (160 channel)
 MINI SNAKE 27, MINI SNAKE M6 ≥ 1000 kHz (90 channel)
 Height (approx.):
 SNAKE 27: 1125 mm, 3.7 ft
 MINI SNAKE 27: 650 mm, 2.1 ft
 Weight (approx.): 350 gr, 0.8 lb
 Mount type:
 SNAKE 27, MINI SNAKE 27: "N" mount, hole Ø12.5 mm, 1/2 in
 SNAKE 27 M6, MINI SNAKE 27 M6: M6 thread joint
 MINI SNAKE 27 MAG: PM-100 S magnetic mount
 Cable length / type:
 SNAKE 27, MINI SNAKE 27: 4m, 13 ft / RG58
 SNAKE 27 M6, MINI SNAKE 27 M6: not supplied
 MINI SNAKE 27 MAG: 3.6m, 11.8 ft / RG58

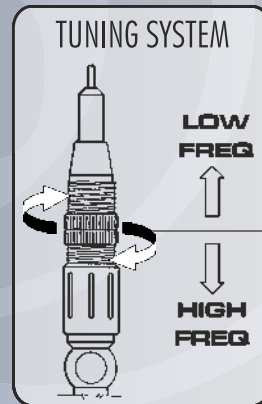
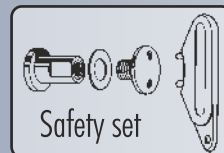
- P/N 2204306.01 SNAKE 27
- P/N 2404306.06 SNAKE 27 M6 (whip only)
- P/N 2204406.01 MINI SNAKE 27
- P/N 2404406.06 MINI SNAKE 27 M6 (whip only)
- P/N 2204406.61 MINI SNAKE 27 MAG



STANDARD MOUNT



MINI SNAKE 27 MAG



SNAKE 27
MINI SNAKE 27



MADE IN ITALY since 1972

MICRO 30 MICRO 60 MAG

FEATURES

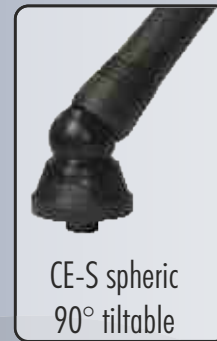
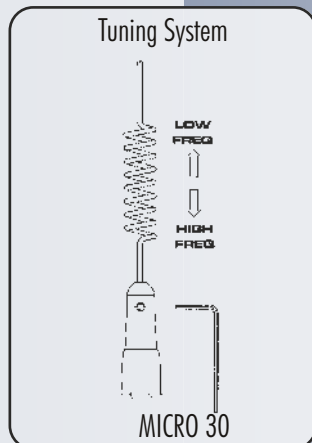
- # CB Mobile antennas
- # MICRO 30 : 17/7 PH stainless steel spring whip
- # "CE", "MAG" mounts: rigid whip, detachable for car-wash
- # "CE-S", "S MAG" mounts: 90° tiltable whip, detachable for car-wash

TECHNICAL DATA

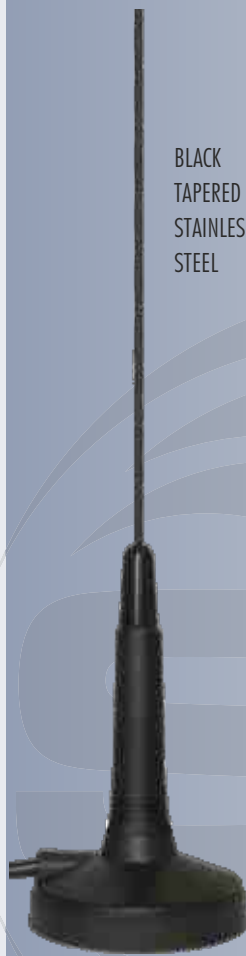
Type: base loaded
 Impedance: 50 Ω
 Frequency range: 27 ... 27.5 MHz
 Polarization: linear vertical
 SWR @ res. freq.: ≤ 1.4
 Max. power: 10 Watts (CW) continuous, 30 Watts (CW) short time
 Bandwidth @ SWR ≤ 2:
 MICRO 30 ≥ 600 kHz (55 channel)
 MICRO 60 ≥ 800 kHz (70 channel)
 Height (approx.): MICRO 30 325 mm, 1.0 ft
 MICRO 60 MAG 520 mm, 1.7 ft
 Weight (approx.): MICRO 30 260 gr, 0.57 lb
 MICRO 60 MAG 410 gr, 0.9 lb
 Mount type:
 MICRO 30 "CE" mount, hole Ø 10 mm / 0.4in
 MICRO 30 S "CE-S" mount, hole Ø 10mm / 0.4in
 MICRO MAG / S MAG magnetic mount
 Cable:
 "CE", "CE-S" mount 4m, 13 ft RG 58
 MICRO 30/60 MAG 3m, 10 ft RG 58
 MICRO 30 S MAG 4.5m, 14.7 ft RG 58

- P/N 2206506.37 MICRO 30
- P/N 2206506.72 MICRO 30 MAG
- P/N 2206506.38 MICRO 30 S
- P/N 2206506.73 MICRO 30 S MAG

- P/N 2208306.72 MICRO 60 MAG



BLACK STAINLESS STEEL SPRING



MICRO 60 MAG



MICRO 30 S

MICRO 30



MICRO 30 MAG



MICRO 30 S MAG





MADE IN ITALY since 1972

MINI MAG 27 SILVER 90 MAG

MINI MAG 27

- # CB Magnetic mobile antenna
- # Factory tuned at mid-band
- # 180° tiltable whip
- # Supplied with stainless steel spring for the best flexibility

TECHNICAL DATA

Type: central loaded
 Impedance: 50 Ω
 Frequency range: 27 ... 27.5 MHz
 Polarization: linear vertical
 SWR @ res. freq.: ≤ 1.2
 Max. power: 10Watts (CW) continuous, 50Watts (CW) short time
 Bandwidth @ SWR ≤ 2: ≥ 280 kHz (23 channel)
 Cable Length / Type / Connector: 3m, 10ft / RG 58 / UHF PL-259
 Height (approx.): 630 mm, 2 ft
 Weight (approx.): 575 gr, 1.25 ft
 Standard mount: Magnetic
 Mag mount overall size: Ø 90 mm, 3.5 in

P/N 2204905.74 MINI MAG 27

SILVER 90 MAG

- # CB & 10m Mobile antennas
- # 17/7 PH tapered stainless steel whip

TECHNICAL DATA

Type: base loaded
 Impedance: 50 Ω
 Frequency range: 26.5 ... 27.5 MHz
 Polarization: linear vertical
 SWR @ res. freq.: ≤ 1.2
 Max. power: 15 Watts (CW) continuous, 150 Watts (CW) short time
 Bandwidth @ SWR ≤ 2: ≥ 1240 kHz (110 channel)
 Height (approx.): 890 mm, 2.9 ft
 Weight (approx.): 310 gr, 0.68 lb
 Mounting:
 SILVER 90 PL whip only with UHF-male (PL259)
 SILVER 90 MAG PM-100 PL magnetic mount
 Cable:
 SILVER 90 PL not supplied
 SILVER 90 MAG 3.6m, 11.8 ft / RG58

P/N 2211906.05 SILVER 90 PL
 P/N 2211906.61 SILVER 90 MAG



BLACK
CHROMED
TAPERED
STAINLESS
STEEL



MINI MAG 27

SILVER 90 MAG



MADE IN ITALY since 1972

TRIFLEX 27/FM/900 TAIFUN 27

TAIFUN 27

- # CB Mobile antenna
- # Tunable by sleeve rotation
- # Helical winding fiberglass whip
- # Detachable for car-wash

TECHNICAL DATA

Type: base and whip loaded
 Impedance: 50 Ω
 Frequency range: 26.965 ... 27.405 MHz tunable
 Polarization: linear vertical
 SWR @ res. freq.: ≤ 1.2
 Max. power: 10 Watts (CW) continuous, 30 Watts (CW) short time
 Bandwidth @ SWR ≤ 2: ≥ 440 kHz (40 channel)
 Cable: 5.5m, 18 ft RG 58
 Height (approx.): 530 mm, 1.7 ft
 Weight (approx.): 340 gr, 0.74 lb
 Standard mount: Taifun mount
 Mounting hole: Ø 10 mm, 0.4 in

P/N 2204715.00 TAIFUN 27

TRIFLEX 27 / FM / 900

- # Multi-band antenna on CB 27 MHz, AM-FM radio & GSM 900 MHz systems
- # CB tunable by acting on the tuning cap
- # Detachable for car-wash

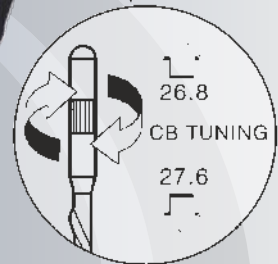
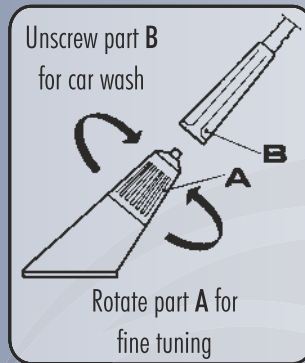
TECHNICAL DATA

Type: central loaded 27 MHz
 1/4 λ helical loaded FM
 1/4 λ 900 MHz
 Impedance: 150 Ω FM
 50 Ω 27 MHz/900 MHz
 Frequency range: 26.8 ... 27.6 MHz tunable
 AM-FM band (0.15-1.6 MHz, 88-108 MHz)
 GSM (TX 880-915 MHz, RX 925-960 MHz)
 Polarization: linear vertical
 SWR @ res. freq.: ≤ 1.2
 Max. power: 10 Watts @ 27 MHz
 20 Watts @ 900 MHz
 Bandwidth @ SWR ≤ 2: ≥ 440kHz (40 channel) @ 27 MHz
 ≥ 100 MHz @ 900 MHz
 Cable: 215 mm, 8.5 in RG316 / FME-male for 27MHz
 165 mm, 6.5 in RG316 / M10x0.75-male for FM
 120 mm, 4.7 in RG316 / FME-male for GSM
 Height (approx.): 500 mm, 1.6 ft
 Weight (approx.): 120 gr, 0.26 lb
 Standard mount: Triflex
 Mounting hole: square 15 mm / 0.6 in or Ø 18 mm / 0.7 in

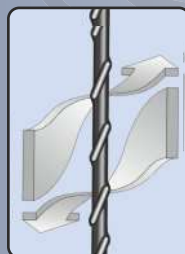
P/N 2216215.00 TRIFLEX no cables included
 P/N 2216215.99 TRIFLEX w/cables CB (1) & FM (2)

Extension Cables Supplied

- 1) 2513305.00 5m RG58 Fme/PL259 for CB
 - 2) 2511805.00 5m FM cable / radio plug
- Only on request:
- 3) 2510605.00 5m RG58 Fme/Fme for GSM



TAIFUN 27



ANTI NOISE SYSTEM

Rubber Sleeve



1) Extension cable for CB 27 MHz



2) Extension cable for FM



3) Extension cable for GSM (only on request)

TRIFLEX 27/FM/900

CB: FME-male

FM: M10x0.75

GSM: FME-male



MADE IN ITALY since 1972

SG-CB 1000 & 1400 GL 27

SG-CB 1000, SG-CB 1400

- # CB & 10m Mobile antennas
- # Tunable from 27 to 28.5 MHz
- # 90° tiltable whip
- # Detachable for car-wash installation
- # Suitable for magnetic mount installation

TECHNICAL DATA

Type: central loaded
 Impedance: 50 Ω
 Frequency range: 27 ... 28.5 MHz
 Polarization: linear vertical
 SWR @ res. freq.: ≤ 1.2
 Max. power:
 SG-CB 1000 60 Watts (CW) continuous
 180 Watts (CW) short time
 SG-CB 1400 120 Watts (CW) continuous
 360 Watts (CW) short time
 Bandwidth @ SWR ≤ 2:
 SG-CB 1000 ≥ 550 kHz (50 channel)
 SG-CB 1400 ≥ 1100 kHz (100 channel)
 Height (approx.):
 SG-CB 1000 1000 mm, 3.3 ft
 SG-CB 1400 1400 mm, 4.6 ft
 Weight (approx.): 320 gr, 0.7 lb
 Standard connector: UHF PL-259
 Cable: not supplied

P/N 2211305.05 SG-CB 1000

P/N 2211405.05 SG-CB 1400

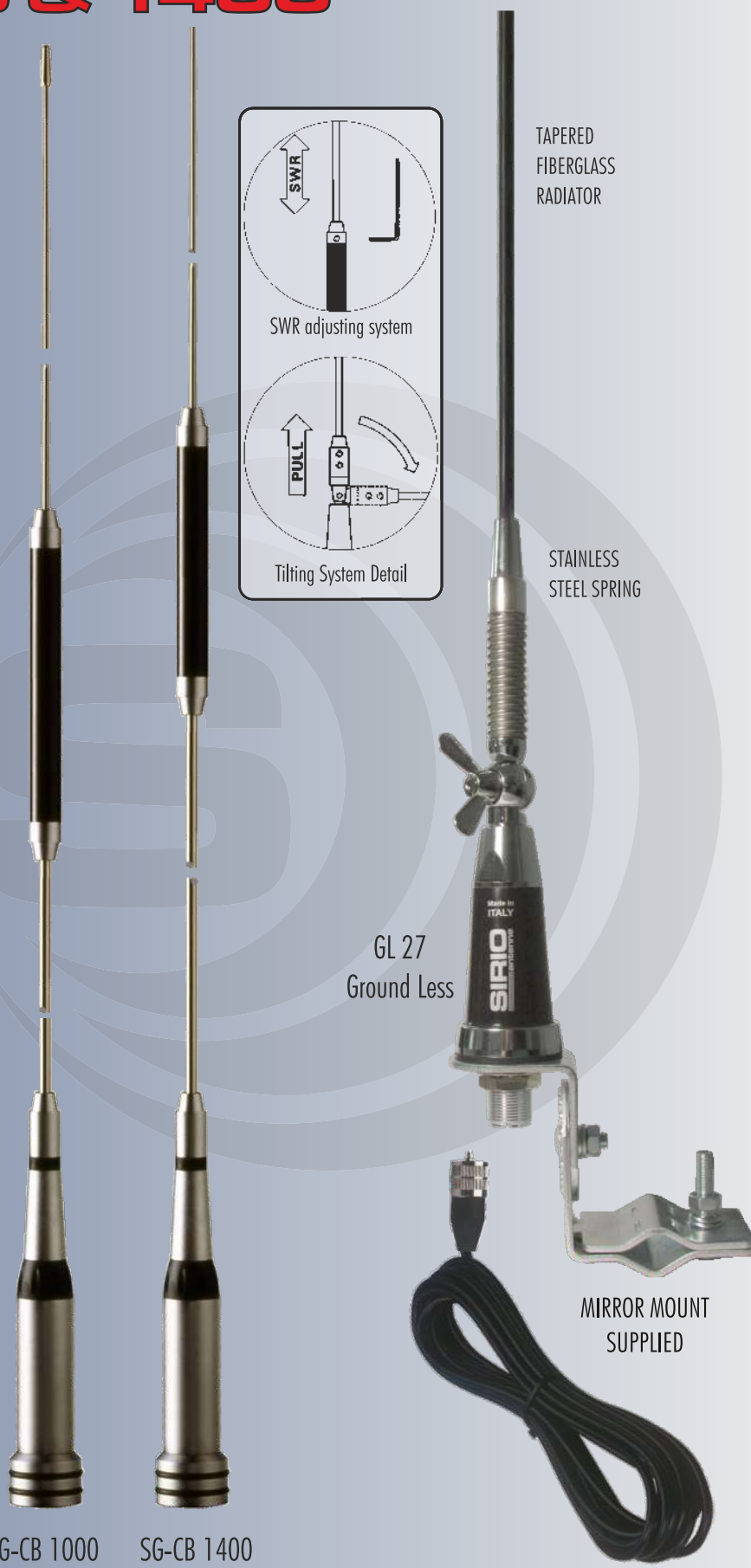
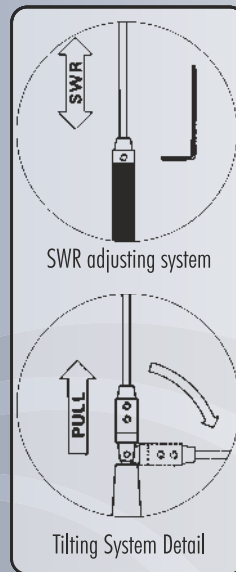
GL 27 Ground Less

- # CB & 10m Mobile antenna
- # Particularily suitable for all vehicles with non-metallic body
- # DC-Ground protection
- # 180° adjustable whip

TECHNICAL DATA

Type: base loaded
 Impedance: 50 Ω
 Center Frequency: 27.185 MHz
 Radiation: omnidirectional
 Polarization: linear vertical
 SWR @ res. freq.: ≤ 1.2
 Max. power: 15Watts (CW) continuous, 50Watts (CW) short time
 Bandwidth @ SWR ≤ 2: ≥ 5500 kHz (500 channel)
 Height (approx.): 1140 mm, 3.7 ft
 Weight (approx.): 430 gr, 1 lb
 Cable Length/ Type/ Connector: 4m, 13 ft/ RG 58/ UHF PL-259

P/N 2211724.76 GL 27 Ground Less



SG-CB 1000

SG-CB 1400

GL 27
Ground Less

MIRROR MOUNT
SUPPLIED



MADE IN ITALY since 1972

TA 27 TA 27 INOX CRUISER 2000

FEATURES

- # CB & 10m Marine antennas
- # Designed to work without Ground Plane
- # Perfect protection against the worst weather conditions
- # DC-Ground Protection
- # TA 27, TA 27 INOX: Provided with stainless steel bracket for an easy installation on the top of the mast
- # Stainless steel hardware
- # TA 27, CRUISER: fiberglass radiator
- # TA 27 INOX: 17/7 PH tapered stainless steel radiator
- # CRUISER 2000: Supplied with white coaxial cable directly connected

TECHNICAL DATA

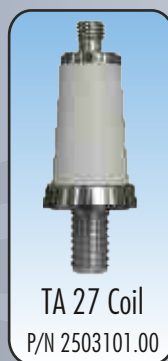
| | |
|------------------------------|--|
| Type: | base loaded |
| Impedance: | 50 Ω |
| Center Frequency: | 27.185 MHz |
| Radiation: | omnidirectional |
| Polarization: | linear vertical |
| SWR @ res. freq.: | ≤ 1.2 |
| Max. power: | 15Watts (CW) continuous, 50Watts (CW) short time |
| Bandwidth @ SWR ≤ 2: | ≥ 5500kHz (500 channel) |
| Cable (Length / Type): | |
| TA 27, TA 27 INOX | not supplied |
| CRUISER 2000 | 5m, 16.4 ft / white RG 58 C/U |
| Height (approx.): | |
| TA 27, TA 27 INOX | 1120 mm, 3.6 ft |
| CRUISER 2000 | 1505 mm, 4.9 ft |
| Weight (approx.): | |
| TA 27 | 385 gr, 0.85 lb |
| TA 27 INOX | 345 gr, 0.76 lb |
| CRUISER 2000 | 720 gr, 1.60 lb |
| Connector: | |
| TA 27, TA 27 INOX | UHF-female |
| Standard mount: | |
| TA 27, TA 27 INOX | "M-1" bracket |
| CRUISER 2000 | "M-8" NY |

P/N 2300120.80 TA 27
 P/N 2300105.80 TA 27 INOX
 P/N 2301220.83 CRUISER 2000

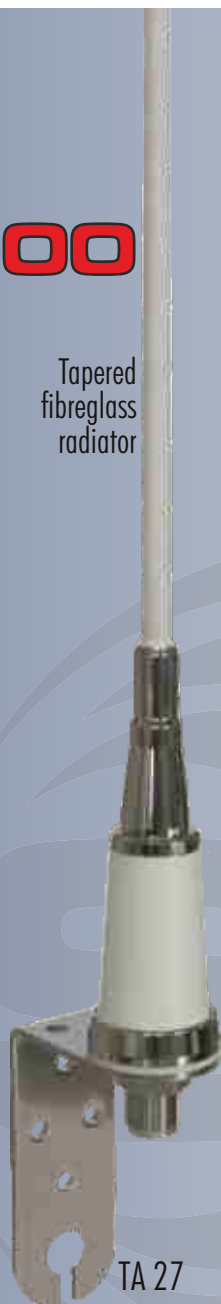
Tapered fiberglass radiator

Flexible tapered stainless steel radiator

Tapered fiberglass radiator



TA 27 Coil
P/N 2503101.00

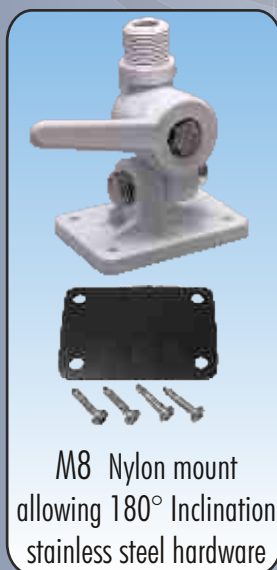


TA 27



TA 27 INOX

"M1" stainless steel bracket



M8 Nylon mount allowing 180° Inclination stainless steel hardware



CRUISER 2000

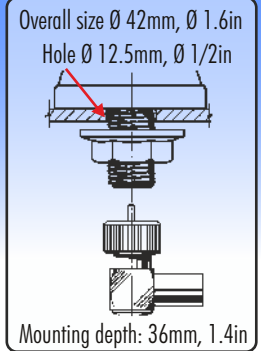


MADE IN ITALY since 1972

N / N-PL mounts



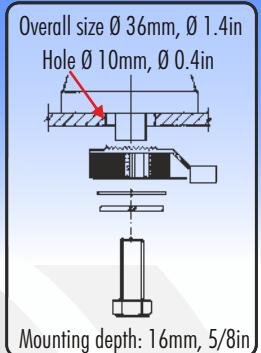
- 01. N Chrome P/N 2500102.01
- 02. N Black P/N 2500102.02
- 03. N 3/8 P/N 2500102.03
- 04. N-PL P/N 2500502.05
- 05. 4m, 13ft Cable for "N" (or "N-PL") mounts ... P/N 2505705.00
- 06. Connector for cable "N" P/N 2505000.00



NE mounts Low profile



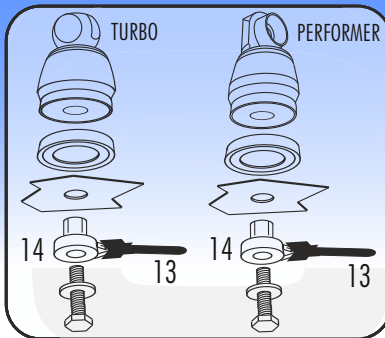
- 07. NE Chrome P/N 2500202.01
- 08. NE Black P/N 2500202.02
- 09. NE 3/8 P/N 2500202.03
- 10. 4m, 13ft Cable for "NE" mount P/N 2505805.00
- 11. Connector for cable "NE" P/N 2505100.00



NE-PL mount

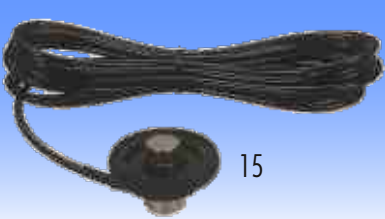


- 12. NE-PL P/N 2500602.05
- 13. 4m, 13ft Cable for "NE-PL/ turbo/ performer" P/N 2505905.00
- 14. Connector for "NE-PL/ turbo/ performer" cable P/N 2505200.00



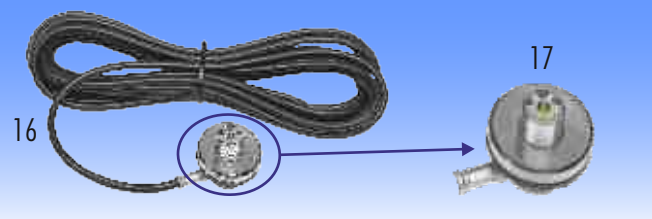
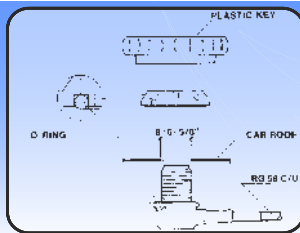
CABLES PL + PL WITH PTFE INSULATOR

- 40cm, 1.3ft Cable PL/ PL P/N 2506005.00
- 50cm, 1.6ft Cable PL/ PL P/N 2504705.00
- 90cm, 3.0ft Cable PL/ PL P/N 2504805.00



SG AC/U ANGULAR CONNECTOR

- Frequency Range: from DC to 500 MHz
Mounting Hole / Overall Size: \varnothing 16mm, 5/8in / \varnothing 38mm, 1.5in
Cable / Connector: 4m, 13ft RG 58 / UHF-male (PL259)
Top connector: UHF-female with PTFE
- 15. SG-AC/U P/N 2513005.00



SO-239 ANGULAR CONNECTOR W/ CABLE

- Frequency Range: from DC to 500 MHz
Mounting Hole / Overall Size: \varnothing 16mm, 5/8in / \varnothing 38mm, 1.5in
Top connector: UHF-female with PTFE
- 16. 4m, 13ft RG 58 cable w/ SO239 angular connector P/N 2506105.00
 - 17. SO 239 connector P/N 2505300.00



- Frequency range: From DC to 600 MHz
Connectors: UHF-Female, gold plated central pin
Mounting hole: \varnothing 16 mm, \varnothing .63 in
Material: Chromed brass, Stainless steel, PTFE
- 18. SO 239 angular connector P/N 2509700.00



- Antenna side: 3/8"-24 stud
Cable side: SO-239 connector
Mounting hole: \varnothing 16 mm, \varnothing .63 in
Material: chrome plated brass
- 19. CB-HDS P/N 2508106.00

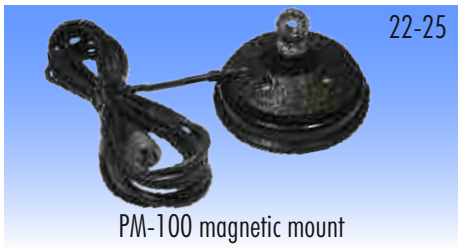


PL CONNECTOR WITH PTFE INSULATOR

- Mounting: Twist-on, center pin soldering
- 20. PL 259 / R for RG58 cable P/N 2505600.00
 - 21. PL 259 / 9 for RG8 and RG213 P/N 2505500.00



MADE IN ITALY since 1972



22-25

PM-100 magnetic mount

Frequency Range: from DC to 500 MHz
Overall Size: Ø 92 mm, 3.6 in
Materials: Ferrite magnet, Chromed Brass, Nylon, Rubber protection
Cable/ Connector: 3.6m, 11.8ft RG 58 / PL259 R male
22. PM-100 S P/N 2502502.01
23. PM-100 S Black P/N 2502502.02
24. PM-100 3/8 P/N 2502502.03
25. PM-100 PL P/N 2502502.05



26-29

PM-125 magnetic mount

Frequency Range: from DC to 500 MHz
Overall Size: Ø 127 mm, 5 in
Materials: Ferrite magnet, Chromed Brass, Nylon, Rubber protection
Cable/ Connector: 3.6m, 11.8ft RG 58 / PL259 R male
26. PM-125 S P/N 2502602.01
27. PM-125 S Black P/N 2502602.02
28. PM-125 3/8 P/N 2502602.03
29. PM-125 PL P/N 2502602.05



30-33

MAG 145 magnetic mount

Frequency Range: from DC to 500 MHz
Overall Size: Ø 160 mm, 6.3 in
Materials: Ferrite magnet, Chromed Brass, Nylon, Rubber protection
Cable/ Connector: 3.6m, 11.8ft RG 58 / PL259 R male
30. MAG 145 S P/N 2502702.01
31. MAG 145 S Black P/N 2502702.02
32. MAG 145 3/8 P/N 2502702.03
33. MAG 145 PL P/N 2502702.05

Available Magnetic Mount Connections



MAG-S
Tiltable Joint chromed or black

MAG-PL
UHF-female connector

MAG-3/8
3/8" connection



ABN-2 TRUNK MOUNT

Type: Trunk mount Mounting hole: Ø 16 mm, 5/8 in
Dimension LxWxH: 60x80x60 mm / 2.4x3.1x2.4 in
Material: Black powder painted steel
34. ABN-2 black P/N 2504105.00



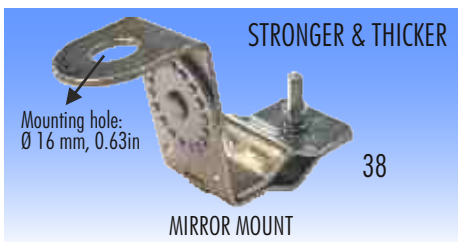
KF-GUTTER MOUNT

Type: Gutter mount Mounting hole: Ø 16 mm, 5/8 in
35. KF black P/N 2504205.00



KF-GUTTER SET

Type: Gutter mount Mounting hole: Ø 16 mm, 5/8 in
36. KF w/ 3/8, 4m-13ft cable/PL259 P/N 2504205.03
37. KF w/SO239, 4m-13ft cable/PL259 P/N 2504205.20



MIRROR MOUNT

Mounting hole: Ø 16 mm, 5/8 in
Material: Galvanized steel
38. ASP-1 Chrome P/N 2504004.00



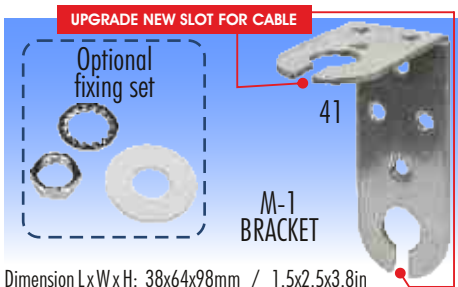
STRONG MIRROR MOUNT

Mounting hole: Ø 16 mm, 0.63 in
Dimension LxWxH: 60x51x85 mm / 2.3x2.0x3.3 in
Material: Aluminium, Stainless steel
39. ASP-4L P/N 2504310.00



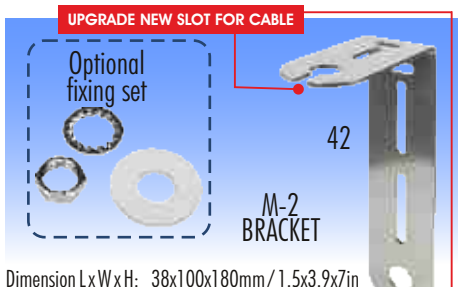
M-8 NY
MARINE MOUNT

Dimension LxWxH: 67x94x124 mm / 2.6x3.7x4.9 in
Weight (approx.): 330 gr, 0.7 lb
Material: Nylon, Stainless steel hardware, rubber gasket
40. M-8 NY marine mount P/N 2503301.00



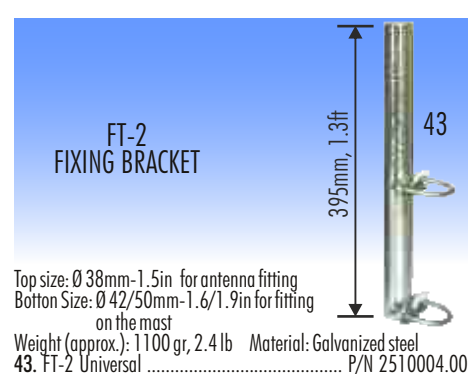
M-1
BRACKET

Dimension LxWxH: 38x64x98mm / 1.5x2.5x3.8 in
Weight (approx.): 120 gr. Material: Stainless Steel
Mounting holes: 2xØ16mm-5/8in. Fixing holes: 7xØ6.5mm-1/4in
41. M-1 bracket P/N 2503503.00
41. M-1 bracket w/ fixing set P/N 2503503.00/SA



M-2
BRACKET

Dimension LxWxH: 38x100x180mm / 1.5x3.9x7 in
Weight (approx.): 210 gr. Material: Stainless Steel
Mounting holes: 2xØ16mm-5/8in
42. M-2 bracket P/N 2503203.00
42. M-2 bracket w/ fixing set P/N 2503203.00/SA

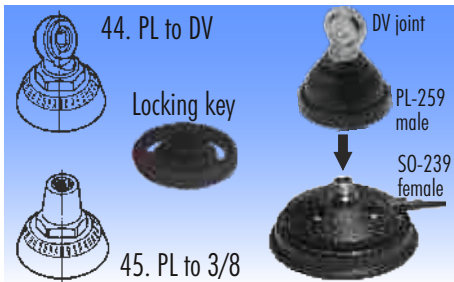


FT-2
FIXING BRACKET

Top size: Ø 38mm-1.5in for antenna fitting
Bottom size: Ø 42/50mm-1.6/1.9in for fitting
on the mast
Weight (approx.): 1100 gr, 2.4 lb Material: Galvanized steel
43. FT-2 Universal P/N 2510004.00



MADE IN ITALY since 1972



44. PL to DV
 Locking key
 DV joint
 PL-259 male
 SO-239 female

45. PL to 3/8

Type: Magnetic mount adaptor
 Material: Chromed zamac, Nylon
 Connection: 44. PL-259-male to DV joint (Black available)
 45. PL-259-male to 3/8" thread

44. MAG-DV adaptor P/N 2504502.01
 44. MAG-DV adaptor black P/N 2504502.02
 45. MAG-3/8 adaptor P/N 2504502.03

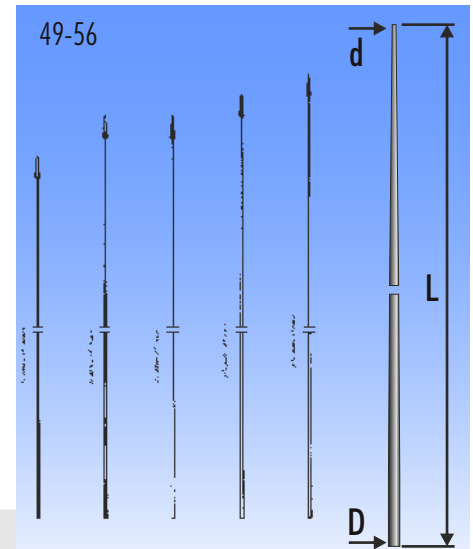


THREAD ADAPTORS

M6-m TO M7-f; M6-m TO M6-m; M6-m TO M5-m

Materials: 46.47. Chromed Brass, Stainless Steel
 48. Stainless Steel

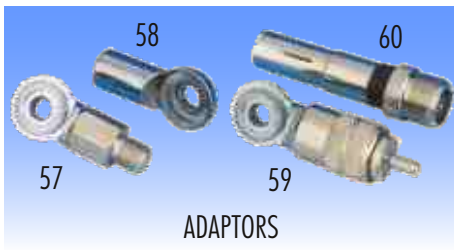
46. 10pcs M6-m / M7-female Chrome P/N 30.AD007.00
 47. 10pcs M6-m / M7-female Black P/N 30.AD007.00/BLK
 48. 5pcs M5-m / M6-m + 5pcs M6x25 P/N 30.AD007.00



STAINLESS STEEL 17/7PH ROD

Bottom diameter (D) x Length (L) x Top diameter (d)
 D x L x d (mm)

49. 3.0 x 1000 x 1.5 Inox P/N 2507003.00
 50. 3.0 x 1000 x 1.5 Black P/N 2507007.00
 51. 3.0 x 1300 x 1.5 Inox P/N 2507103.00
 52. 3.0 x 1300 x 1.5 Black P/N 2507107.00
 53. 3.0 x 1500 x 1.5 Inox P/N 2507203.00
 54. 3.5 x 1600 x 1.5 Inox P/N 2507303.00
 55. 3.5 x 2000 x 1.5 Inox P/N 2507403.00
 56. 3.5 x 1800 x 1.5 Inox P/N 2507503.00



ADAPTORS

57. SB 3/8 adaptor: 3/8"-24 mount to DV joint 2506606.00
 58. SP 3/8 adaptor: 3/8"-24 whip to DV joint mount ... 2506706.00
 59. DV - PL adaptor: from PL-259 mount to DV joint ... 2506806.00
 60. RTx adaptor: from portable transceiver to SO-239 .. 2506906.00



SAFETY-SET / SCREW-BOLT

Materials: Chromed plated brass

61. Safety set Chrome P/N 2506506.00
 62. Safety set Black P/N 2506507.00
 63. Screw & Bolt Chrome P/N 2506206.00
 64. Screw & Bolt Black P/N 2506207.00

Promotional Items



SIRIO T-SHIRT

Overall Dimensions: Small - Medium - Large - XL - XXL
 65. SIRIO T-SHIRT P/N 32.0016



ANTENNAS DISPLAY

Type: Desk display for antennas
 Material: Painted zinc supplied with rubber gasket
 Antennas' fixing hole: 8 x Ø 12.5 mm / 8 x 1/2 in
 66. DISPLAY P/N 2508008.00



SIRIO PENCIL

67. SIRIO Pencil P/N 32.0012



SIRIO KEY STRING

68. SIRIO Key String P/N 32.0006



SIRIO DESK LIGHT

Dimensions W x H x D: 360 x 215 x 75 mm / 14 x 8.5 x 3 in
 Power: 12 VDC with adapter to 220VAC 50Hz
 69. SIRIO DESK LIGHT P/N 32.0003



SIRIO HANGING LIGHT

Dimensions W x H x D: 360 x 215 x 75 mm / 14 x 8.5 x 3 in
 Power: 12 VDC with adapter to 220VAC 50Hz
 70. SIRIO HANGING LIGHT P/N 32.0003/HANG

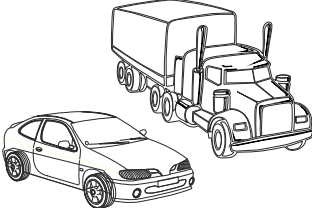





ANTENNA'S DISPENSER

Overall Dimension W x H: 86 x 230 cm / 3 x 7.4 ft
 Material: Painted steel
 Max weight capacity: 20 Kg / 44 lb
 71. ANTENNA'S DISPENSER P/N 32.0002



SUITABLE INSTALLATIONS

| MOBILE ANTENNAS | | HOLE MOUNT | | | | | | | MAGNETIC MOUNT | | | | | BRACKET | | | | | | | | | | | | | |
|---|-------------------------|--|---------------------------|--------------------------|----------------------------|---------------------------|-----------------------|------------------------|---|--|-------------------------------|--------------------------|------------------------------|--|--------------------------|------------------------------|---------------------------|---------------------------|-------------------------------|----------------------------|-----------------------------------|---------------------------------|------------------------------------|-------------------------------------|-----------------------------|-----------------------------|---|
|  | |  See page 35 | | | | | | |  See page 36 | | | | |  See page 36 | | | | | | | | | | | | | |
| PAGE REF. | MODELS | STANDARD MOUNT W/ CABLE | N chrome w/ cable (01+05) | N black w/ cable (02+05) | NE chrome w/ cable (07+10) | NE black w/ cable (08+10) | N-PL w/ cable (04+05) | NE-PL w/ cable (12+13) | SG AC/U angular connect. w/ cable (15) | SO-239 angular connector w/ cable (16) | Angular connector SO-239 (18) | PM-100 S (21) 2502502.01 | PM-100 S blk (22) 2502502.02 | PM-100 PL (24) 2502502.05 | PM-125 S (25) 2502602.01 | PM-125 S blk (26) 2502602.02 | PM-125 PL (28) 2502602.05 | MAG-145 S (29) 2502702.01 | MAG-145 S blk (30) 2502702.02 | MAG-145 PL (32) 2502702.05 | ABN-2 Trunk Mount (33) 2504205.00 | KF gutter mount (34) 2504205.00 | ASP-1 mirror mount (37) 2504004.00 | ASP-4L mirror mount (38) 2504310.00 | M-1 bracket (40) 2503503.00 | M-2 bracket (41) 2503203.00 | |
| 13 | TURBO series | S | | | | | | | | | | | | | | | | | | | | | | | | | |
| | TURBO 800 S PL | | | | | | | | | | | | | ● | | | | | | | ● | ● | ● | ● | ● | ● | ● |
| | TURBO 1000/2000/3000 PL | | | | | | | | | | | | | | | | | | | | ● | ● | ● | ● | ● | ● | ● |
| 14 | PERFORMER series | S | | | | | | | | | | | | | | | | | | | | | | | | | |
| | PERFORMER series PL | | | | | | | | | | | | | | | | | | | | ● | ● | ● | ● | ● | ● | ● |
| 15 | PERFORMER 5000 | S | | | | | | | | | | | | | | | | | | | | | | | | | |
| | PERFORMER 5000 PL | | | | | | | | | | | | | | | | | | | | ● | ● | ● | ● | ● | ● | ● |
| | TURBO 5000 | S | | | | | | | | | | | | | | | | | | | | | | | | | |
| 16 | TURBO 5000 PL | | | | | | | | | | | | | | | | | | | | ● | ● | ● | ● | ● | ● | ● |
| | PERFORMER P2000 | S | | | | | | | | | | | | | | | | | | | | | | | | | |
| 18 | PERFORMER P2000 PL | | | | | | | | | | | | | | | | | | | | ● | ● | ● | ● | ● | ● | ● |
| | BULL TRUCKER coax | S | | | | | | | | | | | | | | | | | | | | | | | | | |
| 20 | BULL TRUCKER PL | | | | | | | | | | | | | | | | | | | | ● | ● | ● | ● | ● | ● | ● |
| | HI-POWER series PL | | | | | | | | | | | | | | | | | | | | ● | ● | ● | ● | ● | ● | ● |
| | HI-POWER series N | | | | | | S | | | | | | | | | | | | | | ● | ● | ● | ● | ● | ● | ● |
| | MEGAWATT series PL | | | | | | | | | | | | | | | | | | | | ● | ● | ● | ● | ● | ● | ● |
| | MEGAWATT series N | | | | | | S | | | | | | | | | | | | | | ● | ● | ● | ● | ● | ● | ● |
| 21 | MEGAWATT 4000 PL R | | | | | | | | | | | | | | | | | | | | ● | ● | ● | ● | ● | ● | ● |
| | T 27 | S | | | ● | | | | | | | ● | | | | | | | | | | | | | | | |
| | T3-27 | S | | | ● | | | | | | | ● | | | | | | | | | | | | | | | |
| | T3-27 MAG | | ● | | ● | | | | | | | S | | | | | | | | | | | | | | | |
| 22 | SUPER T3 MAG | | ● | | ● | | | | | | | | | S | | | | | | | | | | | | | |
| | NEW DELTA 27-95 | S | | | ● | | | | | | | | | | | | | | | | | | | | | | |
| 23 | NEW DELTA 27M-95 | S | | | ● | | | | | | | | | | | | | | | | | | | | | | |
| | CARBONIUM 27 | | | S | | ● | | | | | | | | | | | | | | | | | | | | | |
| 24 | SUPER CARBONIUM 27 | S | | | ● | | | | | | | | | | | | | | | | | | | | | | |
| | OMEGA 27 | | | S | | ● | | | | | | ● | | | | | | | | | | | | | | | |
| | OMEGA 27 MAG | | ● | | ● | | | | | | | S | | S | | | | | | | | | | | | | |

S = STD Standard supply
● = OPT Optional supply
O* = OPT Optional brackets (additional Base for "Hole Mount" is required)



MADE IN ITALY since 1972

SIRIO ANTENNE Srl
via Liguria 15
46049 Volta Mantovana, MN - ITALY
Ph. +39 0376 801515
Fax +39 0376 801254
www.sirioantenne.it
info@sirioantenne.it



While the information has been carefully compiled to the best of our knowledge, nothing is intended as representation or warranty on our part and no statement herein shall be construed as recommendation to infrange existing patents.

SIRIO ANTENNE reserves the right to change on any time and without prior warning the technical specification on any product in this catalogue. Copyright ©2014 - Catalogue P/N 31.0001 Rev. 07/20